

WAAS CH <b>97307</b> <b>W13A</b>	APP CRS <b>134°</b>	Rwy Idg TDZE Apt Elev	<b>8599</b> <b>4497</b> <b>4497</b>
--	------------------------	-----------------------------	---

# RNAV (GPS) RWY 13

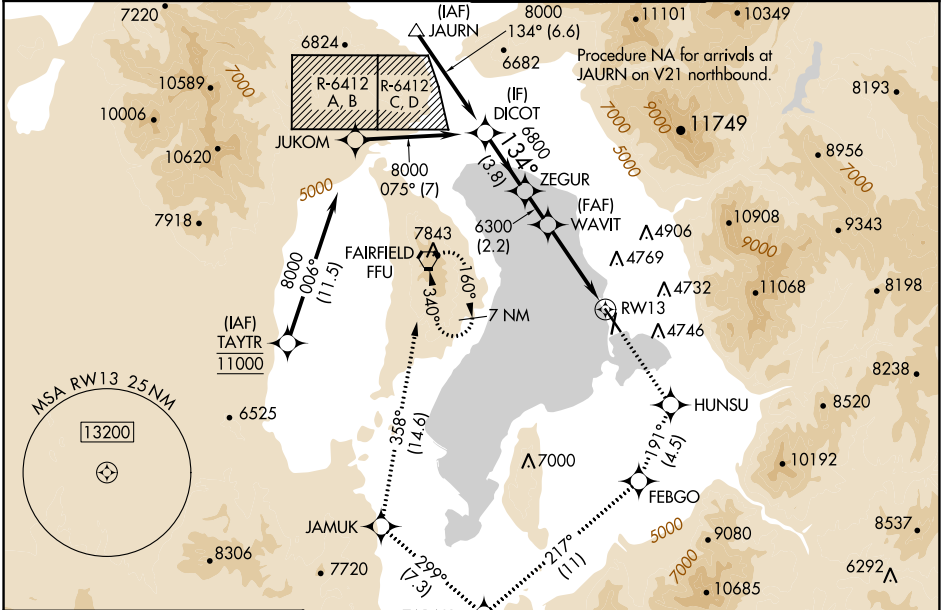
PROVO MUNI (PVU)

RNP APCH - GPS.

⚠ Rwy 13 helicopter visibility reduction below 3/4 SM NA. Circling Rwy 18, 36 NA at night. For uncompensated Baro-VNAV systems, LNAV/VNAV NA below -23°C or above 54°C. When local altimeter setting not received, procedure NA. Circling NA east of Rwy 18 and 31.

MISSED APPROACH: Climb to 9000 direct HUNSU and on track 191° to FEBGO and on track 217° to ZARAK and on track 299° to JAMUK and on track 358° to FFU VORTAC and hold. \*Missed approach requires minimum climb of 215 feet per NM to 7760.

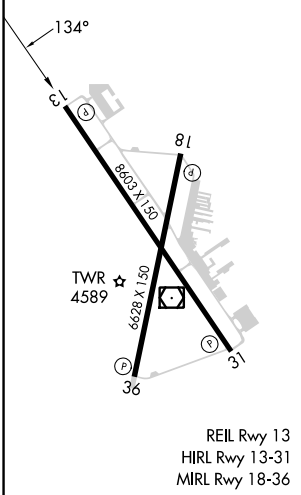
ATIS* <b>135.175</b>	SALT LAKE CITY APP CON <b>118.85 233.7</b>	PROVO TOWER* <b>125.3 (CTAF)</b>	GND CON <b>119.4</b>
-------------------------	---	-------------------------------------	-------------------------



SW-4, 26 DEC 2024 to 23 JAN 2025

SW-4, 26 DEC 2024 to 23 JAN 2025

ELEV 4497	<b>D</b>	TDZE 4497
-----------	----------	-----------



	9000 HUNSU	FEBGO	ZARAK	JAMUK	FFU
DICOT	↑	tr 191°	tr 217°	tr 299°	tr 358°
8000					
CATEGORY	A	B	C	D	
LPV DA*	4756-3/4		259 (300-3/4)		
LNAV/VNAV DA*	4838-1		341 (400-1)		
LPV DA	4925-1 1/4		428 (500-1 1/4)		
LNAV/VNAV DA	4981-1 3/8		484 (500-1 3/8)		
LNAV MDA	5140-1 643 (700-1)		5140-1 7/8 643 (700-1 7/8)		
<b>C</b> CIRCLING	5140-1 643 (700-1)		5160-1 7/8 663 (700-1 7/8) 5280-2 1/2 783 (800-2 1/2)		