

TAYTR ONE ARRIVAL (RNAV)

AL-683 (FAA)

PROVO, UTAH

SW-4, 26 DEC 2024 to 23 JAN 2025

ARRIVAL ROUTE DESCRIPTION

FRNZY TRANSITION (FRNZY.TAYTR1)

JAMMN TRANSITION (JAMMN.TAYTR1)

KNOLE TRANSITION (KNOLE.TAYTR1)

NEEBO TRANSITION (NEEBO.TAYTR1)

SPANE TRANSITION (SPANE.TAYTR1)

YMONT TRANSITION (YMONT.TAYTR1)

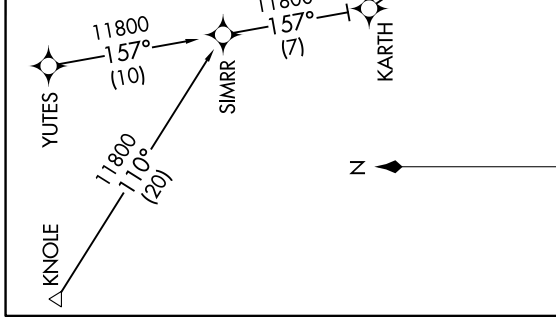
YUTES TRANSITION (YUTES.TAYTR1)

LANDING PVU: From TAYTR, expect ILS or LOC RWY 13 or RNAV (GPS) RWY 13 approach.

LANDING SPK: From TAYTR, expect RNAV (GPS) Y RWY 12 or RNAV (GPS) Z RWY 12 approach.

SALT LAKE CITY APP CON
118.85 233.7
PVU ATIS*
135.175

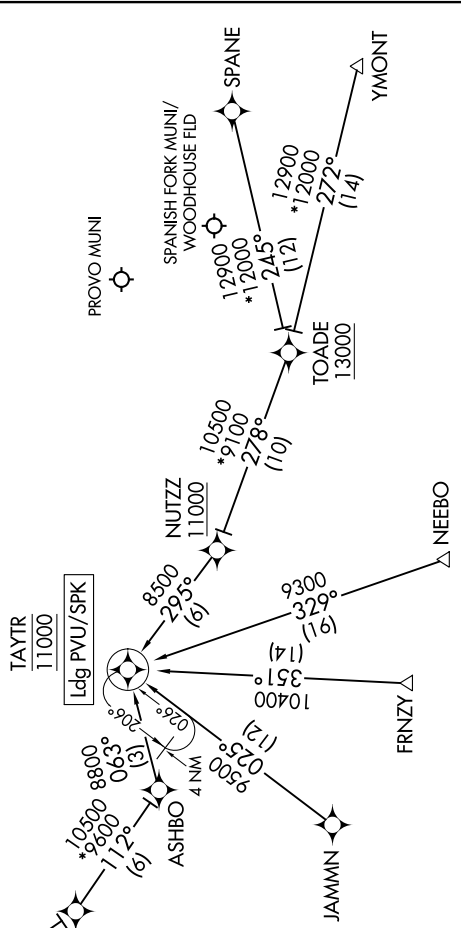
RNAV 1 - GPS.
RADAR required.



TAYTR ONE ARRIVAL (RNAV)

(TAYTR.TAYTR1) 26DEC24

PROVO, UTAH



NOTE: GPS required.

NOTE: FRNZY Transition, ATC assigned only.

NOTE: Chart not to scale.

SW-4, 26 DEC 2024 to 23 JAN 2025