

LOC/DME I-GLD <b>108.9</b> Chan 26	APP CRS <b>305°</b>	Rwy Idg 5499	TDZE 3654
		Apt Elev 3657	

# ILS or LOC RWY 30

RENNER FLD/GOODLAND MUNI (G.LD)

**⚠** Circling NA south of runways 5 and 30. ADF required. VDP NA with Burlington, CO altimeter setting. When local altimeter setting not received, use Burlington, CO altimeter setting and increase all DA 144 feet and all MDA 160 feet. Increase S-ILS 30 all Cats visibility to 5/8 mile, S-LOC 30 Cat C/D visibility to 1 3/8 mile, Circling Cat C visibility to 1 3/4 mile, and Cat D to 2 1/4 mile. Circling NA to Rwy 17 and 35. Circling Rwy 5, 23 NA at night.

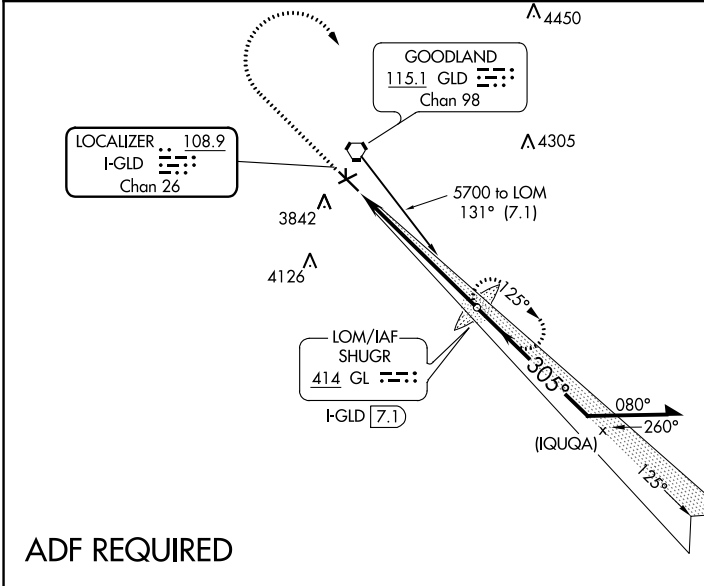
**MALSR**

**MISSED APPROACH:** Climb to 4500 then climbing right turn to 5700 direct SHUGR LOM/I-GLD 7.1 DME and hold.

ASOS  
**121.025**

DENVER CENTER  
**132.7 226.675**

UNICOM  
**122.8 (CTAF)**

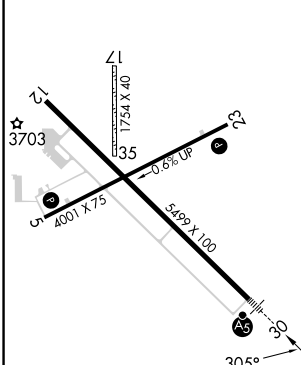


**ALTERNATE MISSED APCH FIX**

**GOODLAND 115.1 GLD**  
Chan 98

## ADF REQUIRED

ELEV 3657	TDZE 3654
-----------	-----------



4500

5700

GL

SHUGR LOM I-GLD [7.1]

Remain within 10 NM

\*LOC only

\*I-GLD [2.3]

I-GLD [1.2]

5643

125°

305°

5700

5700

GS 3.00°

TCH 55

1.2 NM

4.8 NM

CATEGORY	A	B	C	D
S-ILS-30	3854-1/2 200 (200-1/2)			
S-LOC-30	4100-1/2	446 (500-1/2)	4100-7/8	446 (500-7/8)
<input checked="" type="checkbox"/> CIRCLING	4100-1 443 (500-1)	4120-1 463 (500-1)	4120-1 1/2 463 (500-1 1/2)	4240-2 583 (600-2)

Knots	60	90	120	150	180
Min:Sec	6:00	4:00	3:00	2:24	2:00

NC-2, 26 DEC 2024 to 23 JAN 2025

NC-2, 26 DEC 2024 to 23 JAN 2025