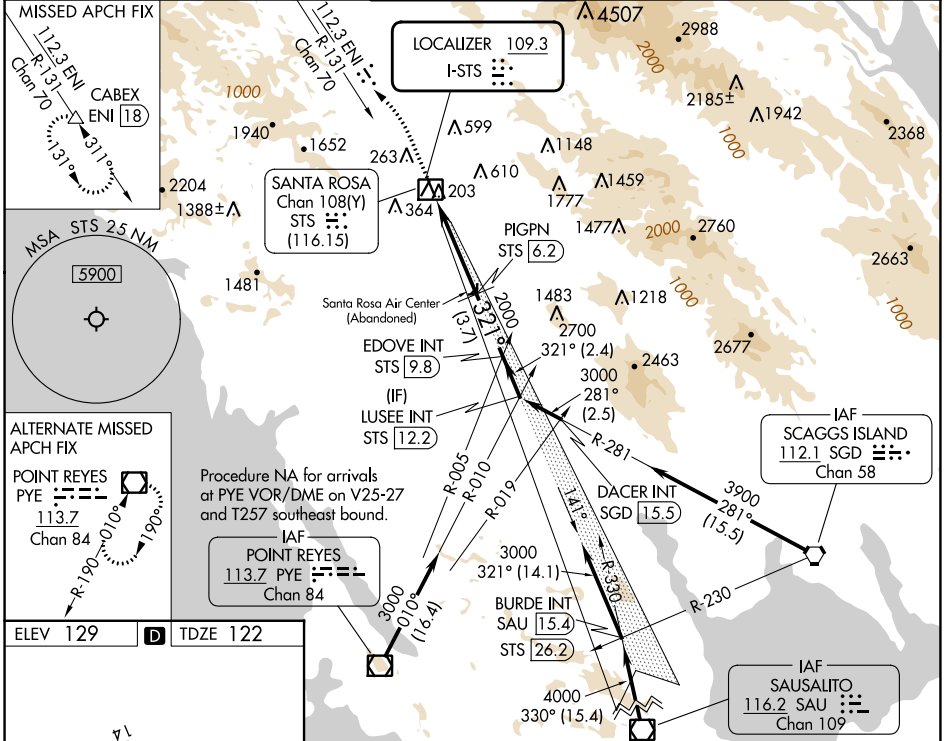


LOC I-STS 109.3	APP CRS 321°	Rwy ldg TDZE Apt Elev	6000 122 129
---------------------------	------------------------	-----------------------------	---

ILS or LOC RWY 32

CHARLES M SCHULZ/SONOMA COUNTY (STS)

DME required.		MALSRS		MISSED APPROACH: Climb to 1020 then climb to 6000 on ENI VORTAC R-131 to CABEX/ENI VORTAC 18 DME and hold, continue climb-in-hold to 6000.	
Autopilot coupled approach NA below 1286. DME from STS DME. DME use requires simultaneous reception of I-STS and STS DME. For inop ALS increase S-ILS 32 visibility all Cats to RVR 4500, S-LOC 32 Cats A/B to RVR 5500.					
ATIS 120.55	OAKLAND CENTER 127.8 353.5	SANTA ROSA TOWER* 118.5 (CTAF) 363.0	GND CON 121.9	UNICOM 122.95	



ELEV 129	D	TDZE 122	1020		6000		CABEX		EDOVE INT STS [9.8]		LUSEE INT STS [12.2]	
			↑ ENI R-131		↑		△		2000		3000	
			STS [0.4]		PIGPN STS [6.2]		2000		321°		GS 3.00° TCH 53	
			-5.7 NM		-3.7 NM		-2.4 NM					
CATEGORY			A		B		C		D			
S-ILS 32			377/24		255 (300-½)							
S-LOC 32			580/24		458 (500-½)		580/45		458 (500-¾)			
CIRCLING			600-1		680-1		1080-3		1420-3			
			471 (500-1)		551 (600-1)		951 (1000-3)		1291 (1300-3)			

SW-2, 26 DEC 2024 to 23 JAN 2025

SW-2, 26 DEC 2024 to 23 JAN 2025