

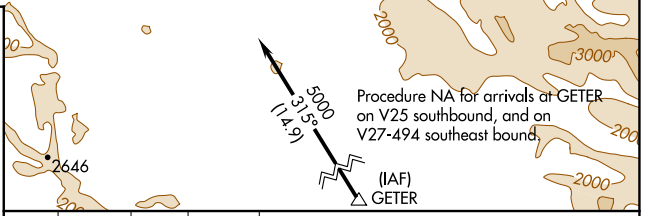
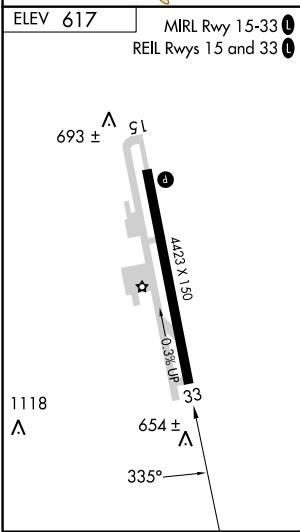
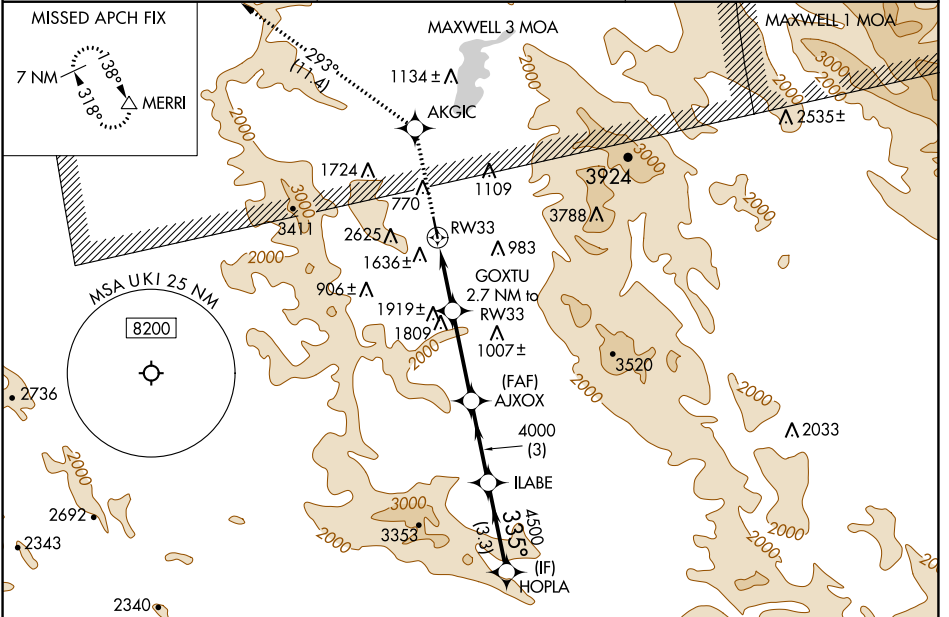
APP CRS 335°	Rwy Idg TDZE Apt Elev 617	N/A N/A 617
------------------------	---	--

RNAV (GPS)-B

UKIAH MUNI (UKI)

RNP APCH - GPS.	<p>▽ Circling NA southwest of Rwy 15-33. Circling Rwy 33 NA at night. ⚠ Rwy 33 helicopter visibility reduction below 1 SM NA. When local altimeter setting not received, procedure NA.</p>	<p>MISSED APPROACH: Climb to 6700 direct AKGIC and on track 293° to MERRI and hold, continue climb-in-hold to 6700.</p>
-----------------	---	--

ASOS 119.275	OAKLAND CENTER 127.8 353.5	UNICOM 123.0 (CTAF) 0
-------------------------------	---	--



6700	AKGIC	tr 293°	MERRI					HOPLA
				AJXOX	ILABE			5000
								335°
								4500
								4000
								2840
								2.7 NM
								3.3 NM
								3 NM
								3.3 NM
CATEGORY	A	B	C	D				
ⓐ CIRCLING	2080-1¼ 1463 (1500-1¼)	2100-1½ 1483 (1500-1½)	2140-3 1523 (1600-3)	2780-3 2163 (2200-3)				

SW-2, 26 DEC 2024 to 23 JAN 2025

SW-2, 26 DEC 2024 to 23 JAN 2025