

WAAS CH 97619 W22A	APP CRS 224°	Rwy Idg TDZE Apt Elev	6502 750 755
--	------------------------	-----------------------------	---

RNAV (GPS) RWY 22

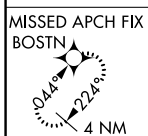
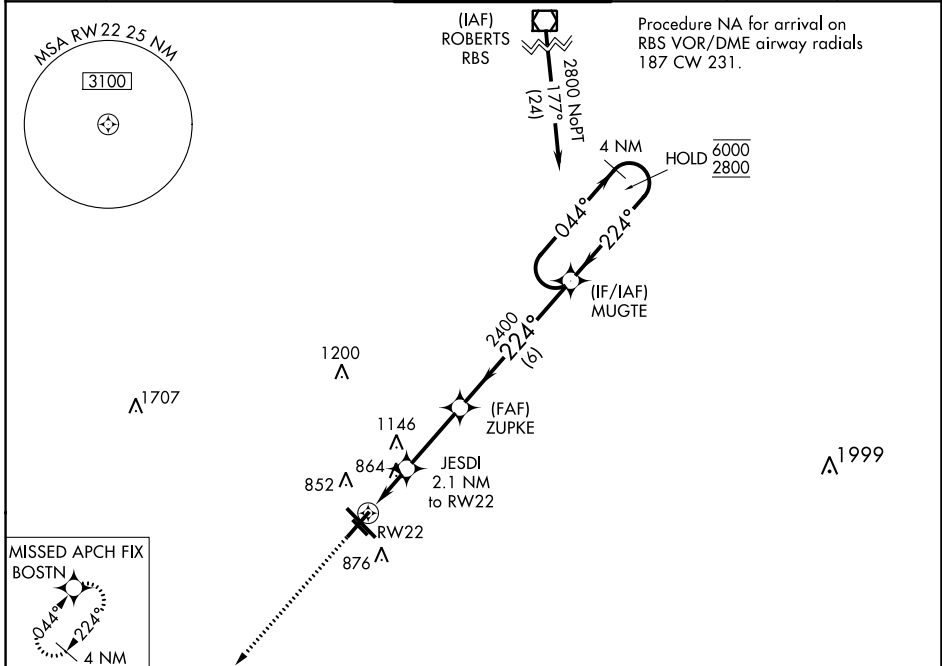
UNIVERSITY OF ILLINOIS/WILLARD (CMI)

RNP APCH - GPS.

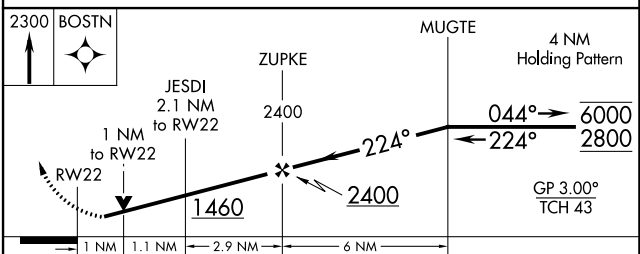
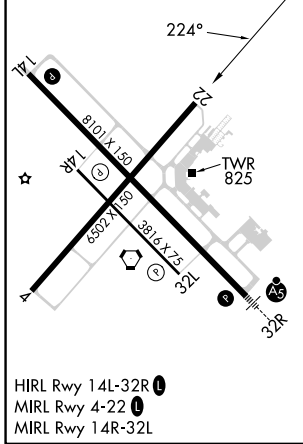
ASR Rwy 22 helicopter visibility reduction below $\frac{3}{4}$ SM NA. For uncompensated Baro-VNAV systems, LNAV/VNAV NA below -21°C or above 54°C.

MISSED APPROACH:
Climb to 2300 direct
BOSTN and hold.

ATIS 124.85	CHAMPAIGN APP CON * 121.35 285.65 (319°-138°) 132.85 290.225 (139°-318°)	CHAMPAIGN TOWER * 120.4 (CTAF) 0 229.4	GND CON 121.8	CLNC DEL 128.75	UNICOM 122.95
-----------------------	--	--	-------------------------	---------------------------	-------------------------



ELEV 755	D	TDZE 750
----------	----------	----------



CATEGORY	A	B	C	D
LPV DA		1000- $\frac{3}{4}$	250 (300- $\frac{3}{4}$)	
LNAV/VNAV DA		1219-1 $\frac{3}{8}$	469 (500-1 $\frac{3}{8}$)	
LNAV MDA		1120-1	370 (400-1)	
C CIRCLING	1240-1	485 (500-1)	1500-2 $\frac{1}{4}$ 745 (800-2 $\frac{1}{4}$)	1500-2 $\frac{1}{2}$ 745 (800-2 $\frac{1}{2}$)

EC-3, 26 DEC 2024 to 23 JAN 2025

EC-3, 26 DEC 2024 to 23 JAN 2025