

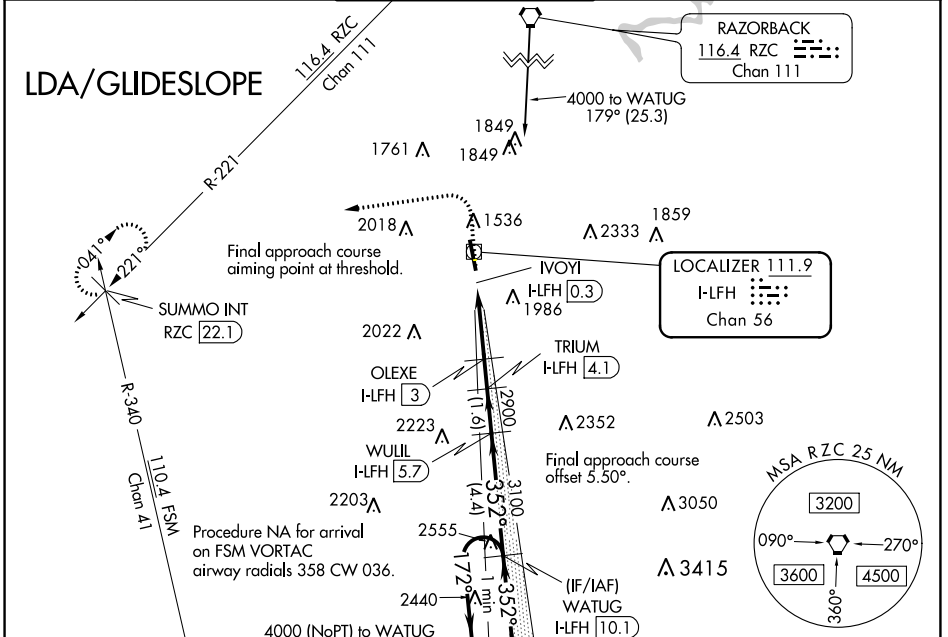
LOC/DME I-LFH 111.9 Chan 56	APP CRS 352°	Rwy Idg TDZE Apt Elev	6005 1241 1252
--	------------------------	-----------------------------	---

LDA RWY 34

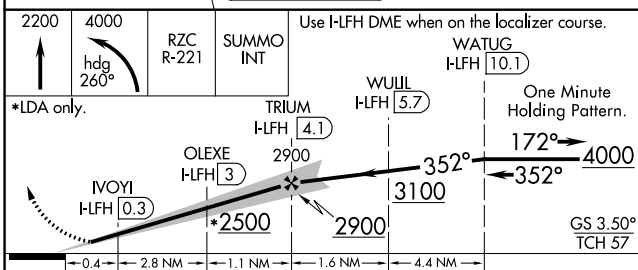
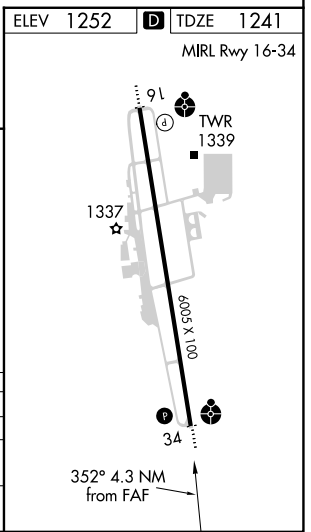
DRAKE FLD (FYV)

DME required for procedure entry.		ODALS	MISSED APPROACH: Climb to 2200 then climbing left turn to 4000 on heading 260° and on RZC VORTAC R-221 to SUMMO INT/ RZC 22.1 DME and hold.
<p>⚠ Inop table does not apply. Circling NA east of Rwy 16-34. Rwy 34 helicopter visibility reduction below 3/4 SM NA.</p>			

ATIS 119.575	RAZORBACK APP CON* 121.0 244.575	DRAKE TOWER* 128.0 (CTAF) 0 371.9	GND CON 121.8	UNICOM 122.95
------------------------	--	---	-------------------------	-------------------------



ELEV 1252	TDZE 1241
MIRL Rwy 16-34	



CATEGORY	A	B	C	D
S-LDA/GS 34	1593-1¼ 352 (400-1¼)			NA
S-LDA 34	2020-1¼ 779 (800-1¼)	2020-1½ 779 (800-1½)	2020-2½ 779 (800-2½)	NA
CIRCLING	2020-1¼ 768 (800-1¼)	2020-1½ 768 (800-1½)	2320-3 1068 (1100-3)	NA

SC-1, 26 DEC 2024 to 23 JAN 2025

SC-1, 26 DEC 2024 to 23 JAN 2025