

| | | | |
|--|------------------------|---|-------------|
| WAAS CH 86734 W09A | APP CRS 093° | Rwy Idg TDZE 797 Apt Elev 808 | 5648 |
|--|------------------------|---|-------------|

RNAV (GPS) RWY 9

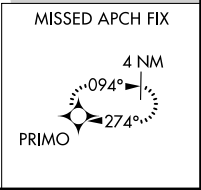
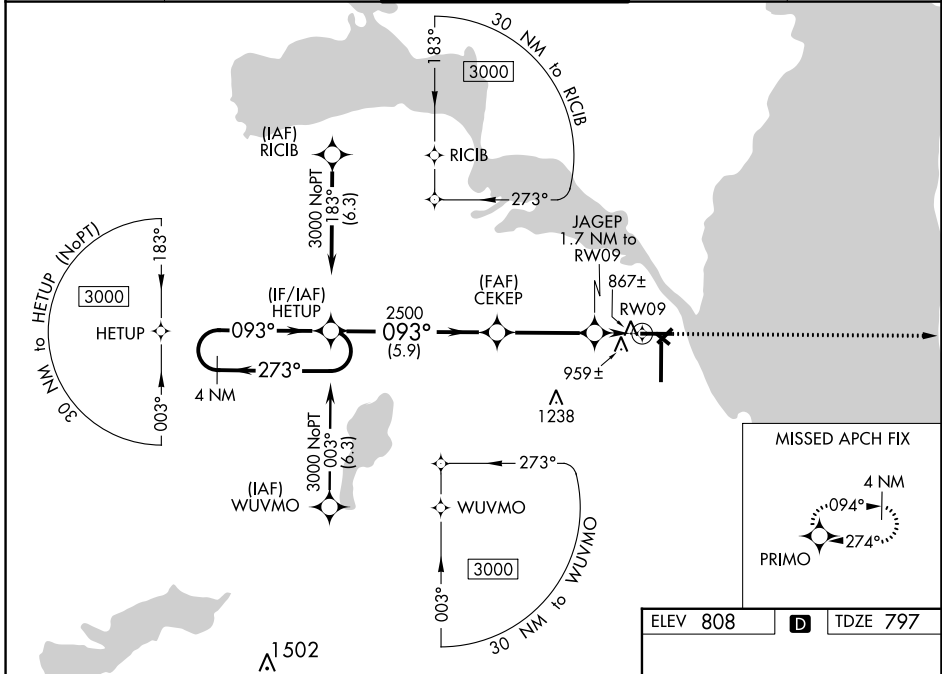
WITTMAN RGNL (OSH)

RNP APCH

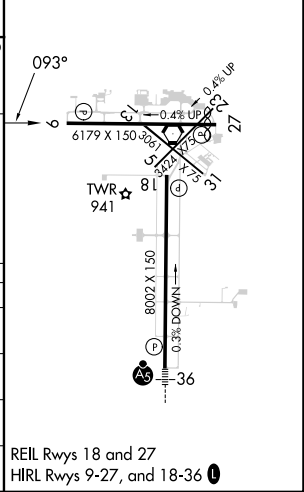
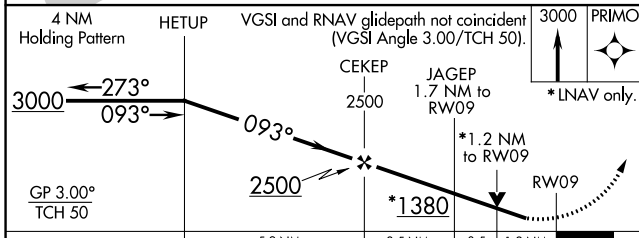
▼ VDP and Baro-VNAV NA with using Fond Du Lac County altimeter setting. When local altimeter setting not received, use Fond Du Lac altimeter setting and increase all DA 31 feet and all MDA 40 feet; increase LPV and LNAV/VNAV all Cnts visibility and LNAV Cnts C/D visibility 1/8 mile, increase Circling Cat D visibility 1/4 mile. Circling Rwy 5, 23, 31 NA at night. Rwy 9 helicopter visibility reduction below 1/4 SM NA. For uncompensated Baro-VNAV systems, LNAV/VNAV NA below -20° C or above 54° C.

MISSED APPROACH:
Climb to 3000 direct PRIMO and hold.

| | | | | |
|----------------------|---|---|-------------------------|-------------------------|
| ATIS 125.9 | MILWAUKEE APP CON 127.0 263.075 | OSHKOSH TOWER ★ 118.5(CTAF) 290.9 | GND CON 132.3 | UNICOM 122.95 |
|----------------------|---|---|-------------------------|-------------------------|



| | | |
|----------|----------|----------|
| ELEV 808 | D | TDZE 797 |
|----------|----------|----------|



| CATEGORY | A | B | C | D |
|-------------------|-----------------------|-----------------------|-------------------------------|-----------------------|
| LPV DA | | 1055-3/4 | 258 (300-3/4) | |
| LNAV/VNAV DA | | 1140-1/8 | 343 (400-1/8) | |
| LNAV MDA | 1220-1 | 423 (500-1) | 1220-1/4 | 423 (500-1/4) |
| C CIRCLING | 1280-1 472 (500-1) | 1300-1 492 (500-1) | 1360-1 1/2 552 (600-1 1/2) | 1440-2 632 (700-2) |

EC-3, 26 DEC 2024 to 23 JAN 2025

EC-3, 26 DEC 2024 to 23 JAN 2025