

VORTAC OSH <b>116.75</b> Chan <b>114 (Y)</b>	APP CRS <b>360°</b>	Rwy Idg TDZE Apt Elev	<b>8002</b> <b>808</b> <b>808</b>
--	------------------------	-----------------------------	---

# VOR RWY 36

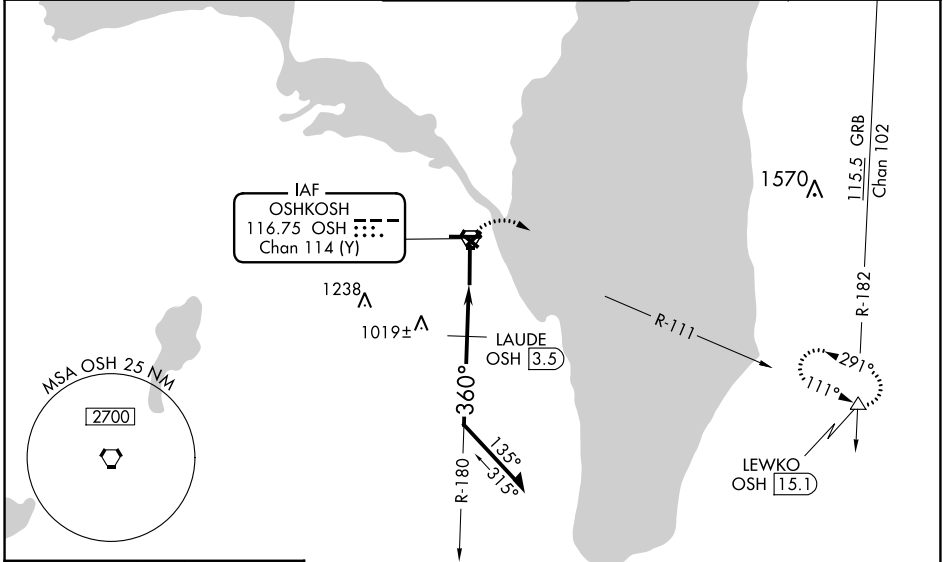
WITTMAN RGNL (OSH)

**⚠** Circling to Rwy 5, 23, and 31 NA at night. When local altimeter setting not received, use Fond Du Lac altimeter setting and increase all MDA 40 feet; increase S-36 Cats C/D visibility and, Circling Cat C visibility  $\frac{1}{8}$  mile, increase Circling Cat D visibility  $\frac{1}{4}$  mile, LAUDE fix minimums increase S-36 Cats C/D visibility to RVR 5500 and Circling Cat D visibility to  $2\frac{1}{4}$  mile. For inop MALS, when using Fond Du Lac altimeter setting, increase LAUDE fix minimums S-36 Cats C/D visibility to  $1\frac{3}{8}$  mile. VDP NA with Fond Du Lac altimeter setting.

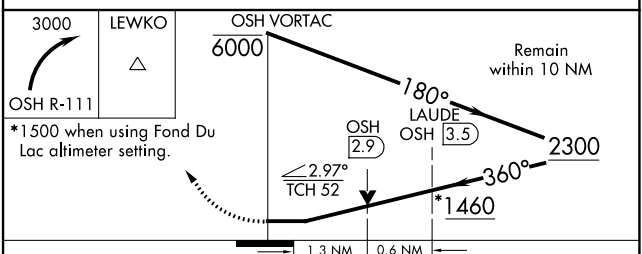
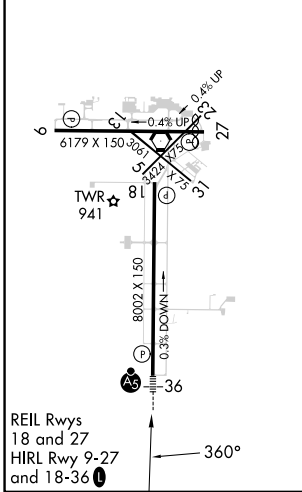
**MALS**

**MISSED APPROACH:**  
Climbing right turn to 3000 on OSH VORTAC R-111 to LEWKO INT/ OSH 15.1 DME and hold.

ATIS <b>125.9</b>	MILWAUKEE APP CON <b>127.0 263.075</b>	OSHKOSH TOWER ★ <b>118.5 (CTAF) 290.9</b>	GND CON <b>132.3</b>	UNICOM <b>122.95</b>
----------------------	---	--	-------------------------	-------------------------



ELEV <b>808</b>	<b>D</b>	TDZE <b>808</b>
-----------------	----------	-----------------



CATEGORY	A	B	C	D
S-36	1460/24	652 (700- $\frac{1}{2}$ )	1460- $1\frac{3}{8}$	652 (700- $1\frac{3}{8}$ )
<b>C</b> CIRCLING	1460-1	652 (700-1)	1460- $1\frac{7}{8}$ 652 (700- $1\frac{7}{8}$ )	1460-2 652 (700-2)
<b>LAUDE FIX MINIMUMS</b>				
S-36	1280/24	472 (500- $\frac{1}{2}$ )	1280/50	472 (500-1)
<b>C</b> CIRCLING	1280-1 472 (500-1)	1300-1 492 (500-1)	1360- $1\frac{1}{2}$ 552 (600- $\frac{1}{2}$ )	1440-2 632 (700-2)

EC-3, 26 DEC 2024 to 23 JAN 2025

EC-3, 26 DEC 2024 to 23 JAN 2025