

HI-TACAN Z RWY 25L

TACAN NPA Chan 119	APCH CRS 266°	Rwy Ldg TDZE 8000 22	Arprt Elev 28
-----------------------	------------------	----------------------------	------------------

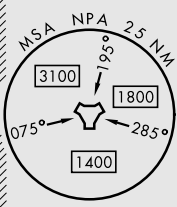
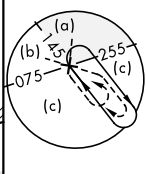
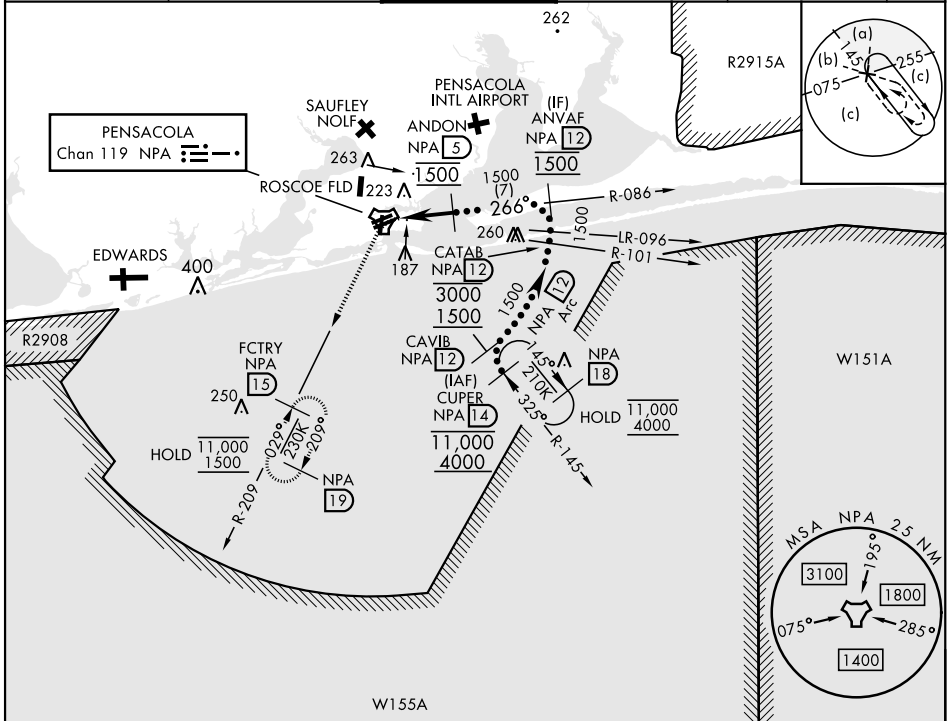
[USN]

PENSACOLA NAS (FORREST SHERMAN FLD) (KNPA)

RADAR required

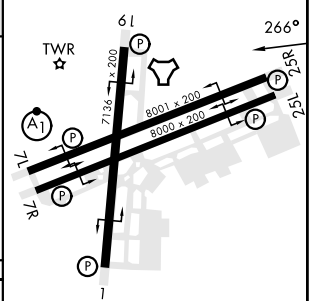
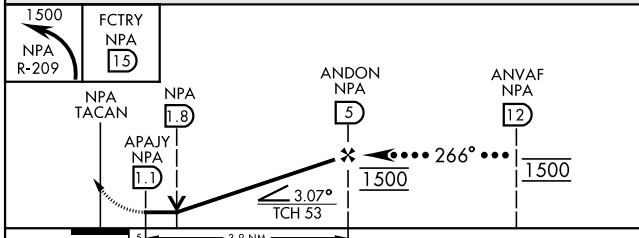
MISSED APPROACH: Climbing left turn to 1500 via NPA TACAN R-209 to FCTRY and hold.

ATIS 124.35 266.8	PENSACOLA APP CON 120.65 270.8	SHERMAN TOWER 120.7 340.2	GND CON 121.7 336.4	CLNC DEL 134.1 268.7	ASR/PAR
----------------------	-----------------------------------	------------------------------	------------------------	-------------------------	---------



ELEV	28	TDZE	22
------	----	------	----

EMERG SAFE ALT 100 NM 3100



CATEGORY	C	D	E
S-25L	440-1 1/8	418 (500-1 1/8)	
CIRCLING	540-1 1/2 512 (600-1 1/2)	580-2	552 (600-2)

HIRL all Rwys
REIL all Rwys

HI-TACAN Z RWY 25L

SE-3, 26 DEC 2024 to 23 JAN 2025

SE-3, 26 DEC 2024 to 23 JAN 2025