

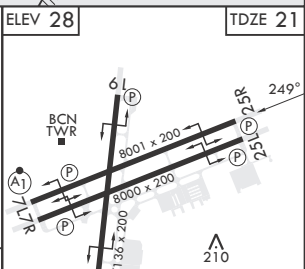
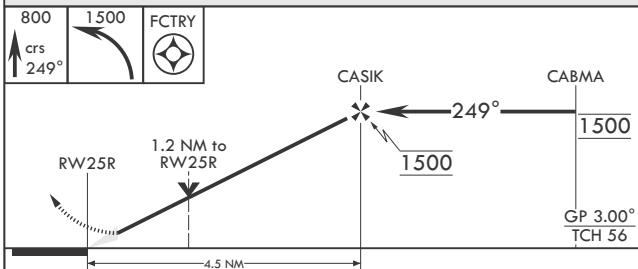
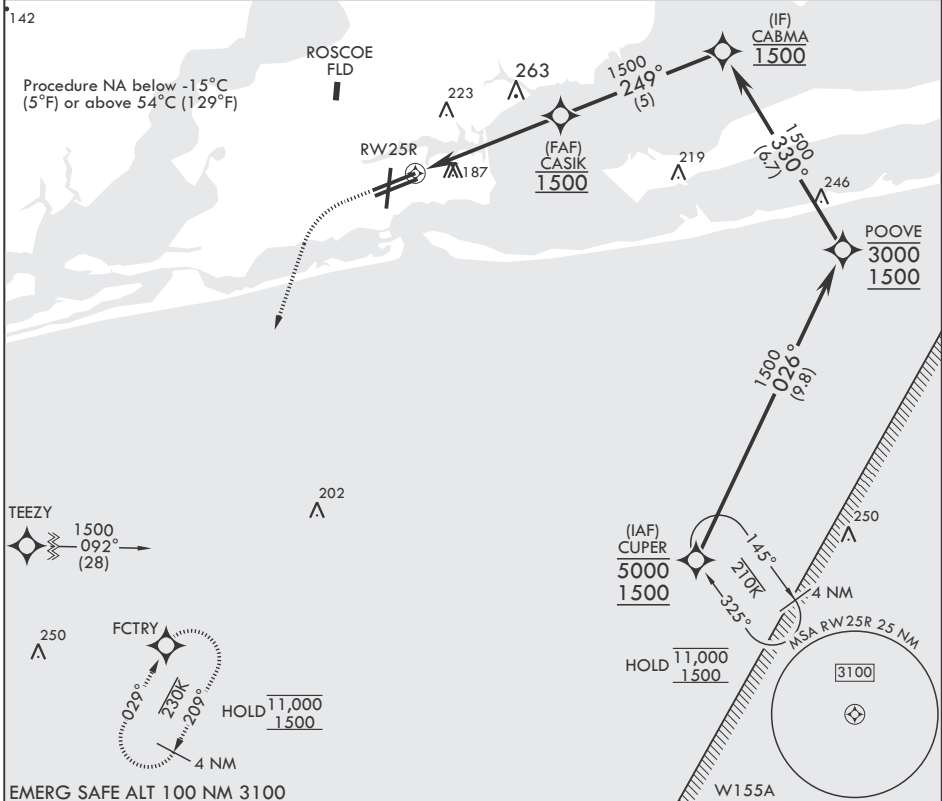
APCH CRS 249°	Rwy Idg 8001
	TDZE 21
	Arprt Elev 28

-(USN)

PENSACOLA NAS (FORREST SHERMAN FLD) (KNPA)

RNP APCH	MISSED APPROACH: Climb to 800 then climbing left turn to 1500 direct FCTRY and hold.				
----------	--	--	--	--	--

ATIS 124.35 266.8	APP CON 120.65 270.8	SHERMAN TOWER 120.7 340.2	SHERMAN GND CON 121.7 336.4	SHERMAN CLNC DEL 134.1 268.7	ASR/PAR
-----------------------------	--------------------------------	-------------------------------------	---------------------------------------	--	---------



CATEGORY	A	B	C	D
LNAV/VNAV DA	440-1 1/8	419	(500-1 1/8)	
LNAV MDA	440-1	419 (500-1)	440-1 1/8	419 (500-1 1/8)
CIRCLING	520-1	492 (500-1)	540-1 1/2 512 (600-1 1/2)	580-2 552 (600-2)

HIRL all Rwys
REIL all Rwys

SE-3, 26 DEC 2024 to 23 JAN 2025

SE-3, 26 DEC 2024 to 23 JAN 2025