

TACAN Y RWY 25R

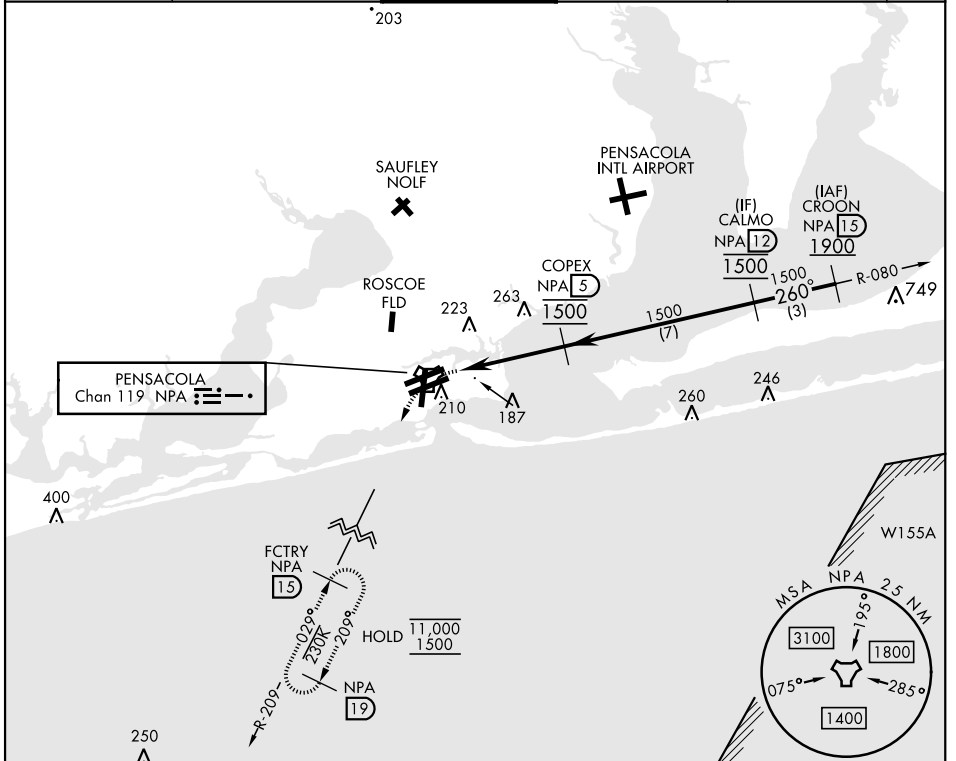
TACAN NPA Chan 119	APCH CRS 260°	Rwy ldg TDZE Arprt Elev 8000 22 28
------------------------------	-------------------------	---

[USN]

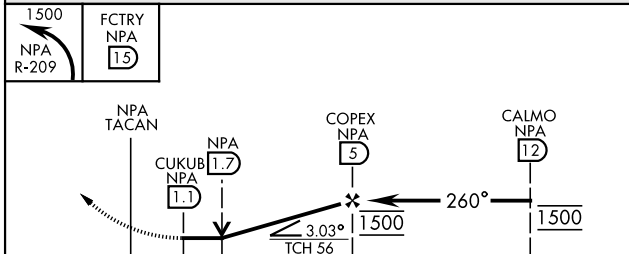
PENSACOLA NAS (FORREST SHERMAN FLD) (KNPA)

RADAR required ▼	MISSED APPROACH: Climbing left turn to 1500 via NPA TACAN R-209 to FCTRY and hold.
---------------------	--

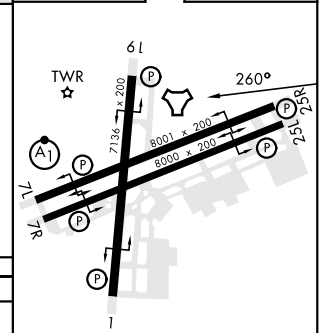
ATIS 124.35 266.8	APP CON 120.65 270.8	SHERMAN TOWER 120.7 340.2	GND CON 121.7 336.4	CLNC DEL 134.1 268.7	ASR/PAR
-----------------------------	--------------------------------	-------------------------------------	-------------------------------	--------------------------------	---------



EMERG SAFE ALT 100 NM 3100



ELEV	28	TDZE	22
------	----	------	----



CATEGORY	A	B	C	D	E
S-25R	440-1 419 (500-1)		440-1½ 419 (500-1½)		
CIRCLING	520-1 492 (500-1)		540-1½ 512 (600-1½)	580-2 552 (600-2)	

HIRL all rwys
REIL all rwys

TACAN Y RWY 25R

SE-3, 26 DEC 2024 to 23 JAN 2025

SE-3, 26 DEC 2024 to 23 JAN 2025