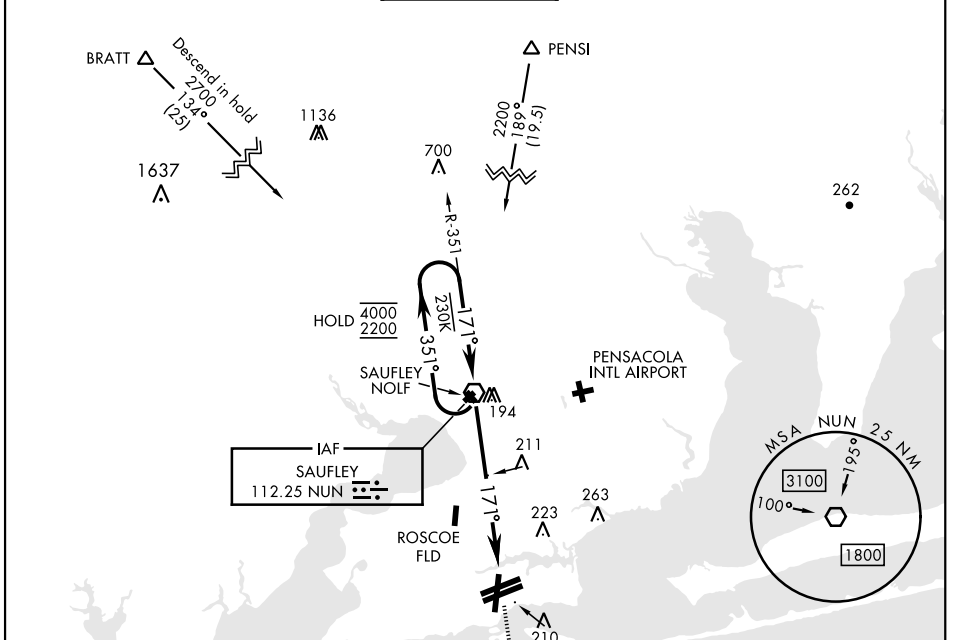


VOR Y RWY 19

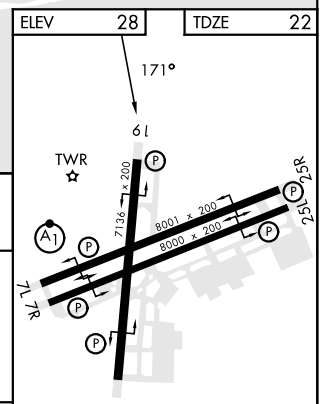
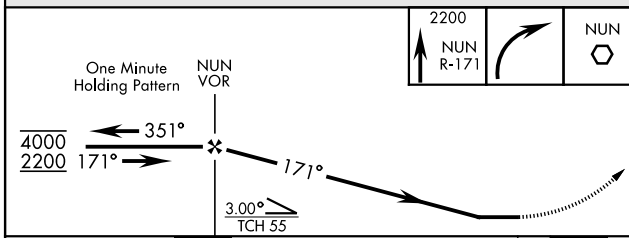
VOR NUN 112.25	APCH CRS 171°	Rwy Ldg TDZE Arprt Elev 7136 22 28
--------------------------	-------------------------	--

[USN] PENSACOLA NAS (FORREST SHERMAN FLD) (KNPA)

<p>MISSED APPROACH: Climb to 2200 via NUN R-171. Then turn right direct NUN VOR and hold. Remain within 15 NM of NUN.</p>					
ATIS 124.35 266.8	APP CON 120.65 270.8	SHERMAN TOWER 120.7 340.2	GND CON 121.7 336.4	CLNC DEL 134.1 268.7	ASR/ PAR



EMERG SAFE ALT 100 NM 3100



CATEGORY	A	B	C	D
S-19	500-1 478 (500-1)		500-1½ 478 (500-1½)	
C CIRCLING	520-1 492 (500-1)		540-1½ 512 (600-1½)	580-2 552 (600-2)

HIRL all rwys					
REIL all rwys					
FAF to MAP 6.0 NM					
Knots	60	90	120	150	180
Min:Sec	6:00	4:00	3:00	2:24	2:00

VOR Y RWY 19

SE-3, 26 DEC 2024 to 23 JAN 2025

SE-3, 26 DEC 2024 to 23 JAN 2025