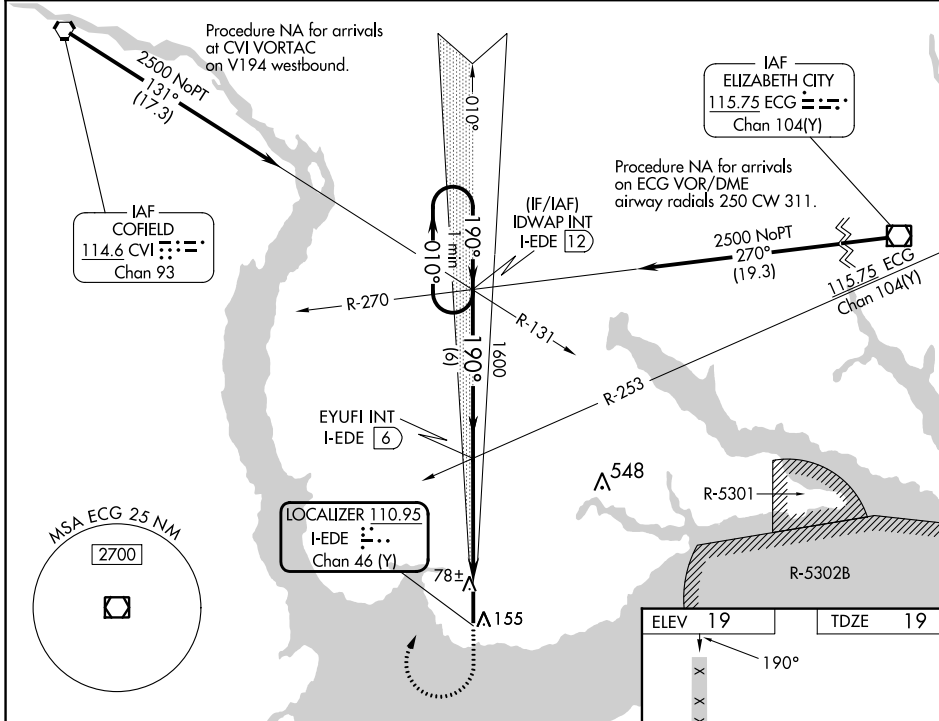


LOC/DME I-EDE 110.95 Chan 46(Y)	APP CRS 190°	Rwy Idg 6001 TDZE 19 Apt Elev 19
---	------------------------	---

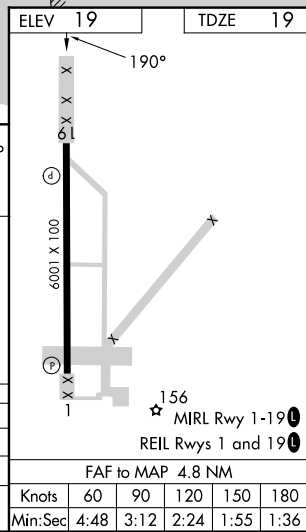
ILS or LOC RWY 19

NORTHEASTERN RGNL (E/D/E)

DME or RADAR required for procedure entry.		<p>▽ When local altimeter setting not received, use Elizabeth City altimeter setting: increase S-ILS 19 DA to 276 feet; increase all MDAs 60 feet and S-LOC 19 visibility Cat C/D 1/8 SM, and Circling visibility Cat C 1/4 SM. VDP NA when using Elizabeth City altimeter setting. Rwy 19 helicopter visibility reduction below 3/4 SM NA.</p>	<p>MISSED APPROACH: Climb to 600 then climbing right turn to 2500 on heading 030° and I-EDE localizer N course to IDWAP INT/I-EDE 12 DME and hold.</p>
AWOS-3 118.275	WASHINGTON CENTER 123.85 279.65		



VGS1 and ILS glidepath not coincident (VGS1 Angle 3.00/TCH 48). One Minute Holding Pattern IDWAP INT I-EDE 12 EYUFI INT I-EDE 6		600 2500 hdg 030°	I-EDE N crs	IDWAP INT
2500 ← 010° 190° → GS 3.00° TCH 43	1600 1600 1600	190° 190° 190°	I-EDE 2.5	I-EDE 1.2
6 NM 3.9 NM 1.3 NM				
CATEGORY	A	B	C	D
S-ILS 19	219-3/4 200 (200-3/4)			
S-LOC 19	480-1	461 (500-1)	480-1 3/8	461 (500-1 3/8)
CIRCLING	520-1	501 (600-1)	560-1 1/2	580-2 561 (600-2)



SE-2, 26 DEC 2024 to 23 JAN 2025

SE-2, 26 DEC 2024 to 23 JAN 2025

FAF to MAP 4.8 NM					
Knots	60	90	120	150	180
Min:Sec	4:48	3:12	2:24	1:55	1:36