

# GARLAND FIVE DEPARTURE

RADAR and DME required.

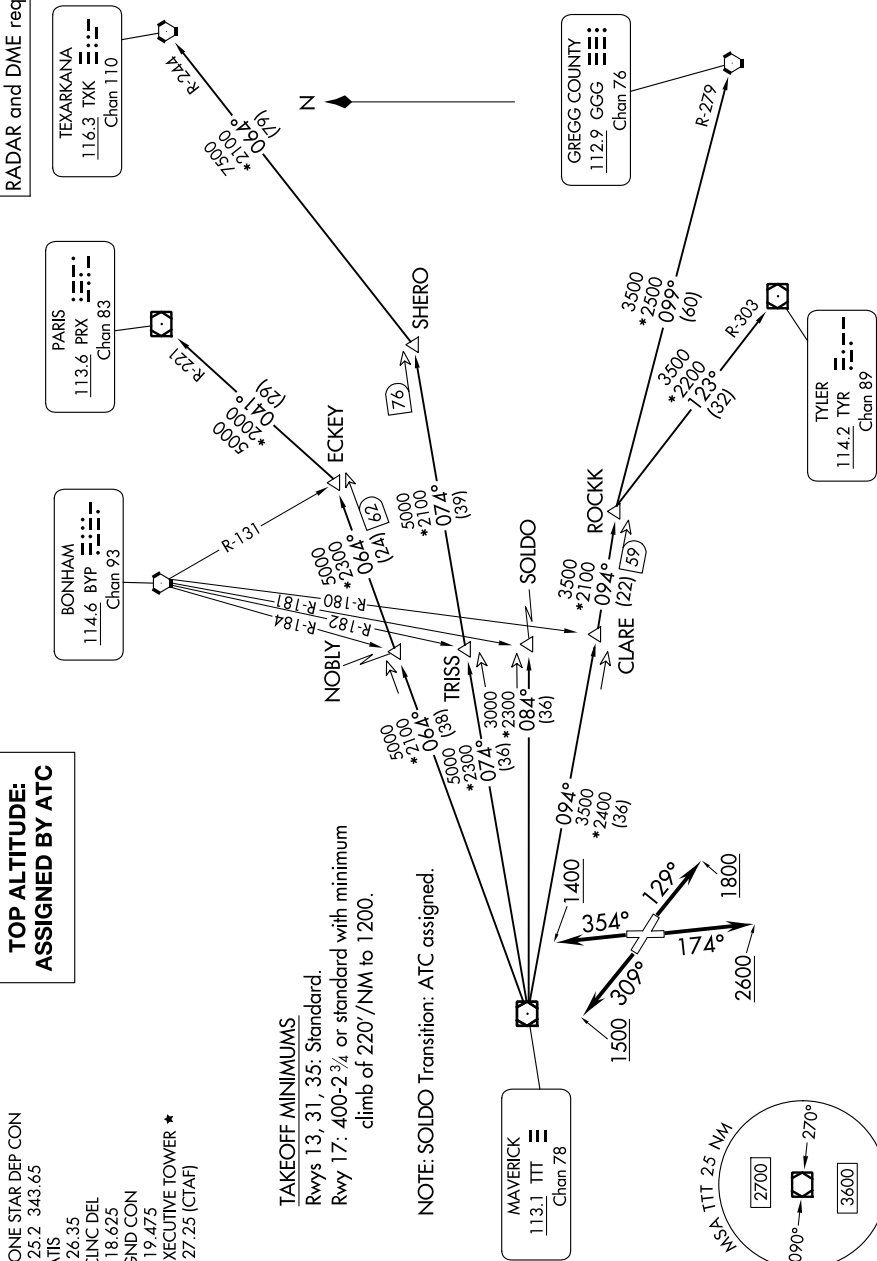
## TOP ALTITUDE: ASSIGNED BY ATC

LONE STAR DEP CON  
125.2 343.65  
ATIS  
126.35  
CINC DEL  
118.625  
GND CON  
119.475  
EXECUTIVE TOWER ★  
127.25 (CTAF)

### TAKEOFF MINIMUMS

Rwys 13, 31, 35: Standard.  
Rwy 17: 400-2 3/4 or standard with minimum  
climb of 220'/NM to 1200.

NOTE: SOLDO Transition: ATC assigned.



(CONTINUED ON FOLLOWING PAGE)

NOTE: Chart not to scale.