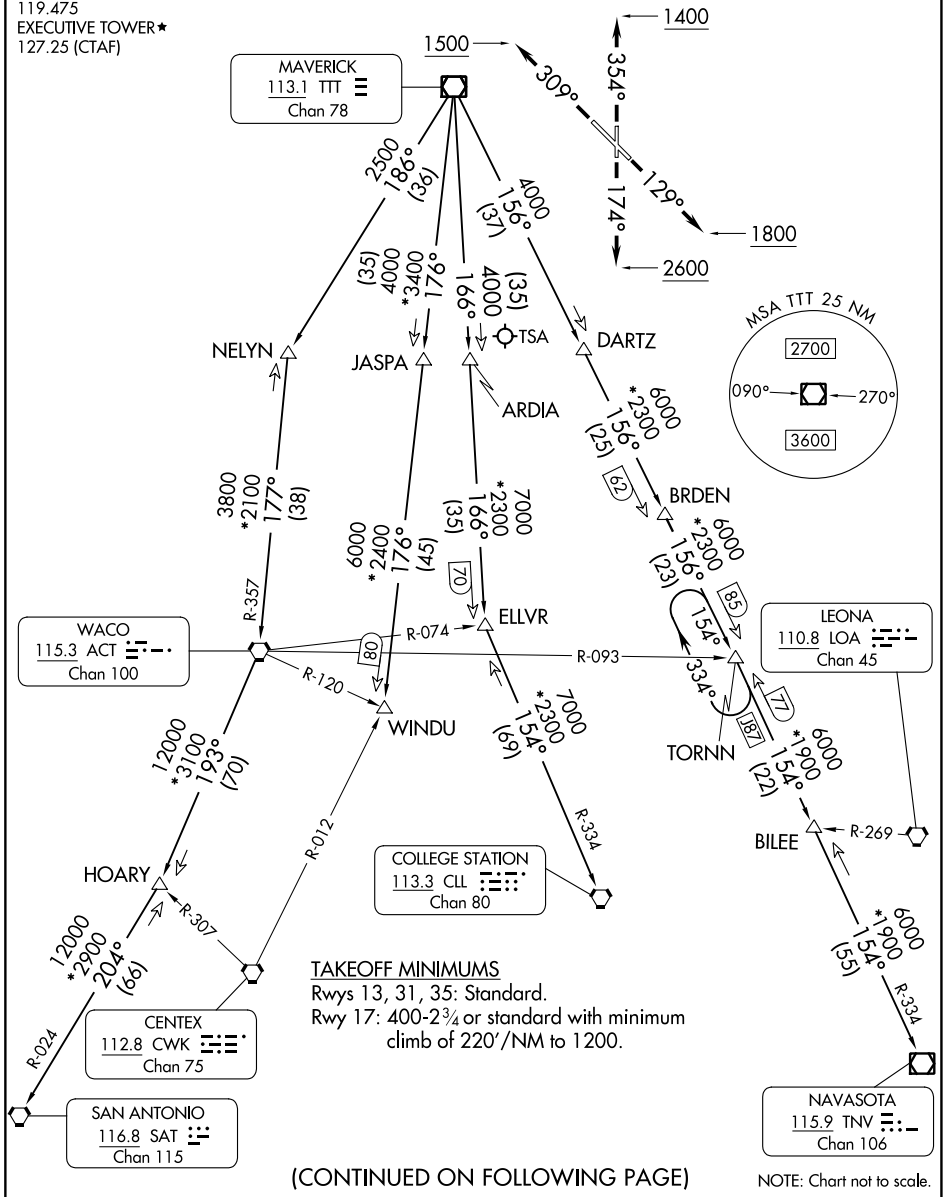


JOE POOL SEVEN DEPARTURE

LONE STAR DEP CON
125.2 343.65
ATIS
126.35
CLNC DEL
118.625
GND CON
119.475
EXECUTIVE TOWER★
127.25 (CTAF)

RADAR and DME required.

**TOP ALTITUDE:
ASSIGNED BY ATC**



SC-2, 26 DEC 2024 to 23 JAN 2025

SC-2, 26 DEC 2024 to 23 JAN 2025