

WAAS CH <b>82129</b> <b>W16A</b>	APP CRS <b>162°</b>	Rwy Idg TDZE Apt Elev	<b>5000</b> <b>176</b> <b>177</b>
--	------------------------	-----------------------------	---

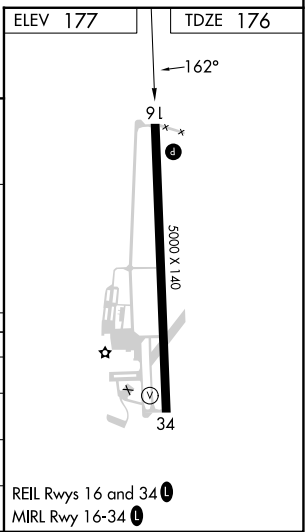
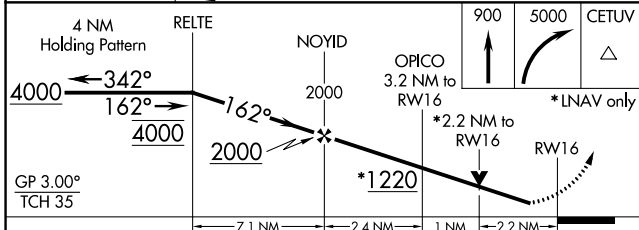
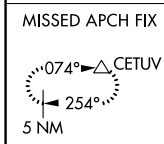
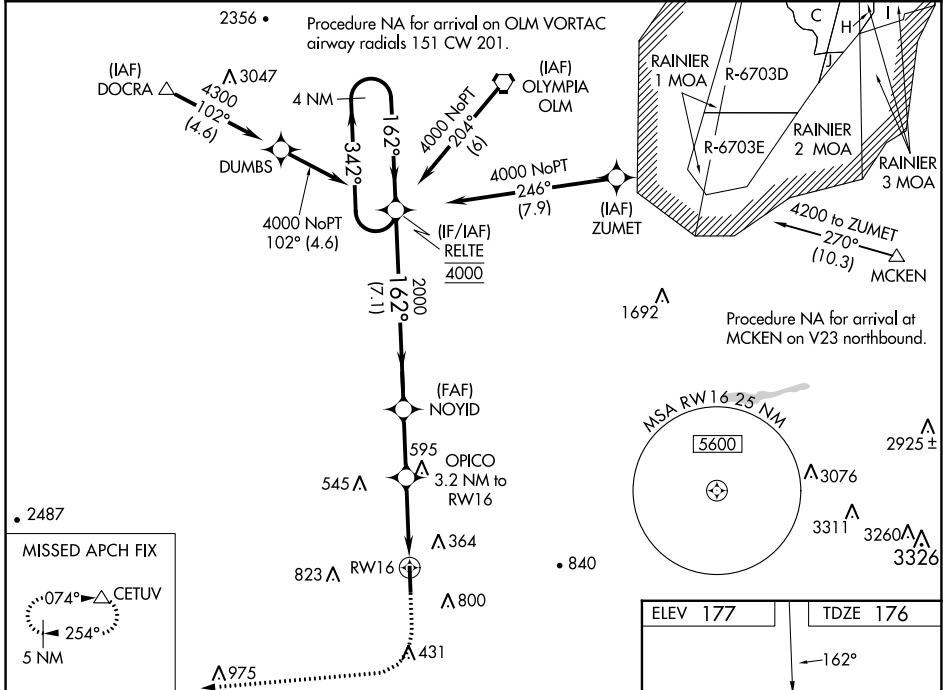
# RNAV (GPS) RWY 16

CHEHALIS-CENTRALIA (CLS)

**⚠** For uncompensated Baro-VNAV systems, LNAV/VNAV NA below -15°C (5°F) or above 54°C (130°F). Circling NA northeast of Rwy 16-34. DME/DME RNP-0.3 NA. Baro-VNAV and VDP NA when using Olympia altimeter setting. When local altimeter setting not received, use Olympia altimeter setting: increase LPV DA to 522 feet, LNAV/VNAV DA to 878 feet and all MDA 60 feet; increase LPV all Cats visibility ¼ SM, LNAV Cat B ½ SM, LNAV Cats C/D ½ SM and Circling Cat B ¼ SM. Rwy 16 helicopter visibility reduction below ¾ SM NA.

**MISSED APPROACH:**  
Climb to 900 then climbing right turn to 5000 direct CETUV and hold, continue climb-in-hold to 5000.

AWOS-3 <b>118.025</b>	SEATTLE APP CON <b>121.1 377.15</b>	UNICOM <b>122.8 (CTAF) 0</b>
--------------------------	--	---------------------------------



CATEGORY	A	B	C	D
LPV DA	476-1 300 (300-1)			
LNAV/VNAV DA	832-2½ 656 (700-2½)			
LNAV MDA	900-1 724 (800-1)		900-2 724 (800-2)	
<b>C</b> CIRCLING	900-1 723 (800-1)	1080-1¼ 903 (1000-1¼)	1200-3 1023 (1100-3)	1300-3 1123 (1200-3)

REIL Rws 16 and 34  
MIRL Rwy 16-34

NW-1, 26 DEC 2024 to 23 JAN 2025

NW-1, 26 DEC 2024 to 23 JAN 2025