

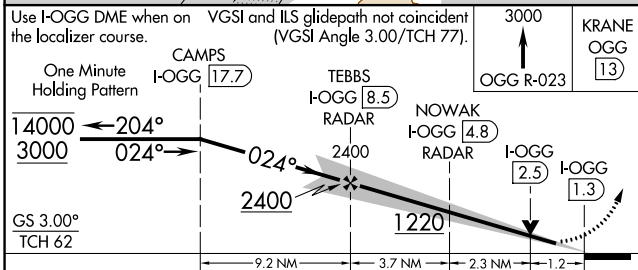
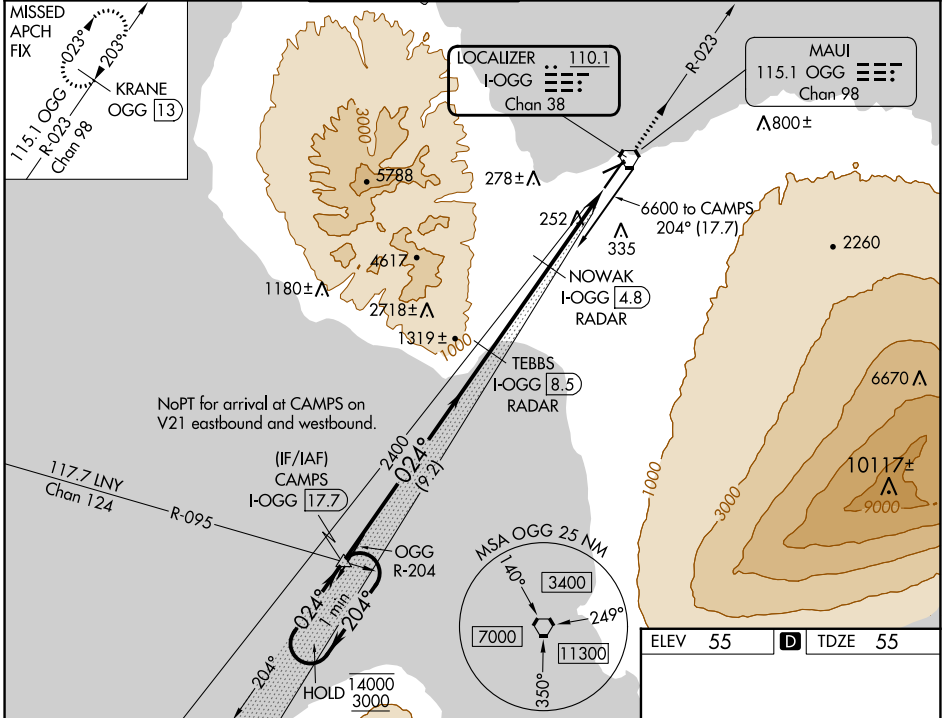
LOC/DME I-OGG <b>110.1</b> Chan <b>38</b>	APP CRS <b>024°</b>	Rwy Idg TDZE Apt Elev <b>6995</b> <b>55</b> <b>55</b>
---	------------------------	--

# ILS Y or LOC Y RWY 2

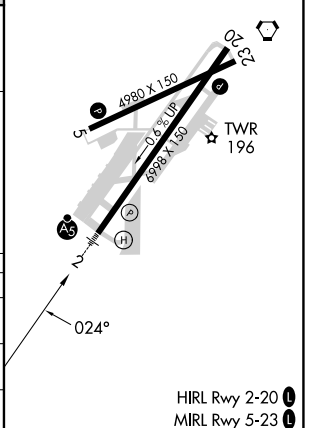
KAHALUI (OGG)(PHOG)

MSE required.	MALSR	MISSED APPROACH: Climb to 3000 on OGG VORTAC R-023 to KRANE/OGG 13 DME and hold.
▼ For inop ALS, increase S-ILS 2 Cat E visibility to ¾ SM, ▲ and S-LOC 2 Cats C/D/E visibility to 1¾ SM.		

ATIS <b>128.6</b>	HCF APPROACH <b>120.2 322.4</b> (NORTH) <b>119.5 225.4</b> (SOUTH)	MAUI TOWER ★ <b>118.7</b> (CTAF) <b>0 279.6</b>	GND CON <b>121.9 279.6</b>	CLNC DEL <b>120.6 290.5</b>	UNICOM <b>122.95</b>
----------------------	--	--	-------------------------------	--------------------------------	-------------------------



ELEV 55	<b>D</b> TDZE 55
---------	------------------



PAC, 26 DEC 2024 to 20 FEB 2025

PAC, 26 DEC 2024 to 20 FEB 2025

HIRL Rwy 2-20  
MIRL Rwy 5-23