

LOC/DME I-ADS <b>110.1</b> Chan <b>38</b>	APP CRS <b>157°</b>	Rwy Idg <b>6224</b> TDZE <b>644</b> Apt Elev <b>645</b>
---	------------------------	---

# ILS or LOC RWY 16

ADDISON (ADS)

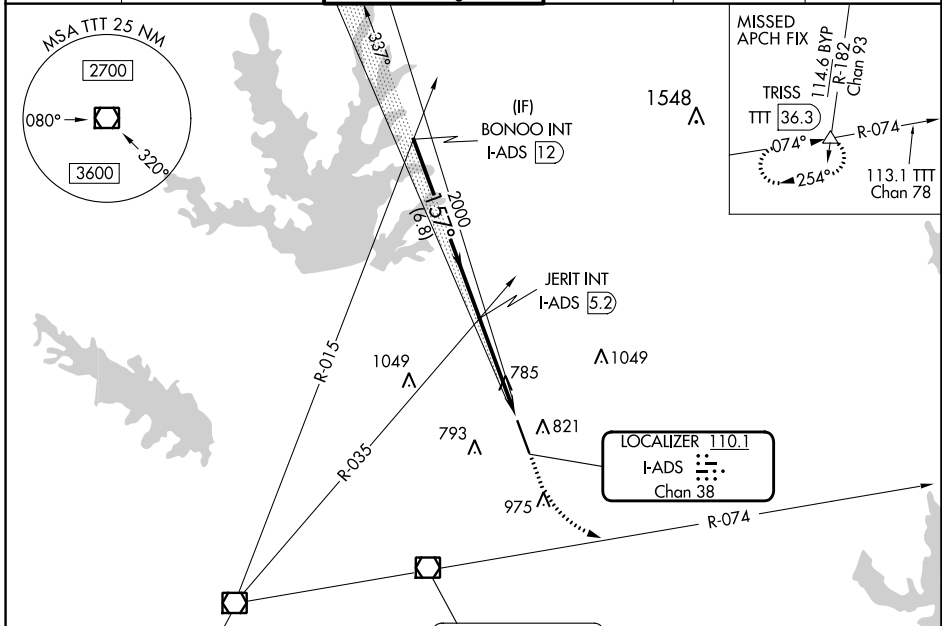
**RADAR required for procedure entry.**

**MAJLSR**

**MISSED APPROACH:** Climb to 1500 then climbing left turn to 3000 on heading 107° and TTT VOR/DME R-074 to TRISS INT/TTT 36.3 DME and hold.

**⚠** Rwy 16 helicopter visibility reduction below 1 SM NA. Inop table does not apply to S-ILS-16 all Cats, S-LOC-16 Cats A, B and C. For inop ALS, increase S-LOC-16 Cat D visibility to 1¼.

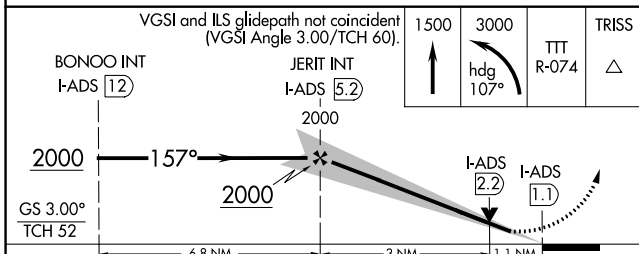
ATIS <b>133.4</b>	LONE STAR APP CON <b>124.3 282.275</b>	ADDISON TOWER* <b>126.0 (CTAF) 0 239.0</b>	GND CON <b>121.6</b>	CLNC DEL <b>119.55</b>	UNICOM <b>122.95</b>
----------------------	---	---	-------------------------	---------------------------	-------------------------



**MAVERICK**  
113.1 TTT  
Chan 78

**COWBOY**  
116.2 CVE  
Chan 109

ELEV 645 **D** TDZE 644



CATEGORY	A	B	C	D
S-ILS 16		894-1	250 (300-1)	
S-LOC 16		1040-1	396 (400-1)	
<b>CIRCLING</b>	1200-1	555 (600-1)	1280-1¾ 635 (700-1¾)	1400-2½ 755 (800-2½)

REIL Rwy 34  
HIRL Rwy 16-34 **D**

FAF to MAP 4.1 NM

Knots	60	90	120	150	180
Min:Sec	4:06	2:44	2:03	1:38	1:22

SC-2, 26 DEC 2024 to 23 JAN 2025

SC-2, 26 DEC 2024 to 23 JAN 2025