

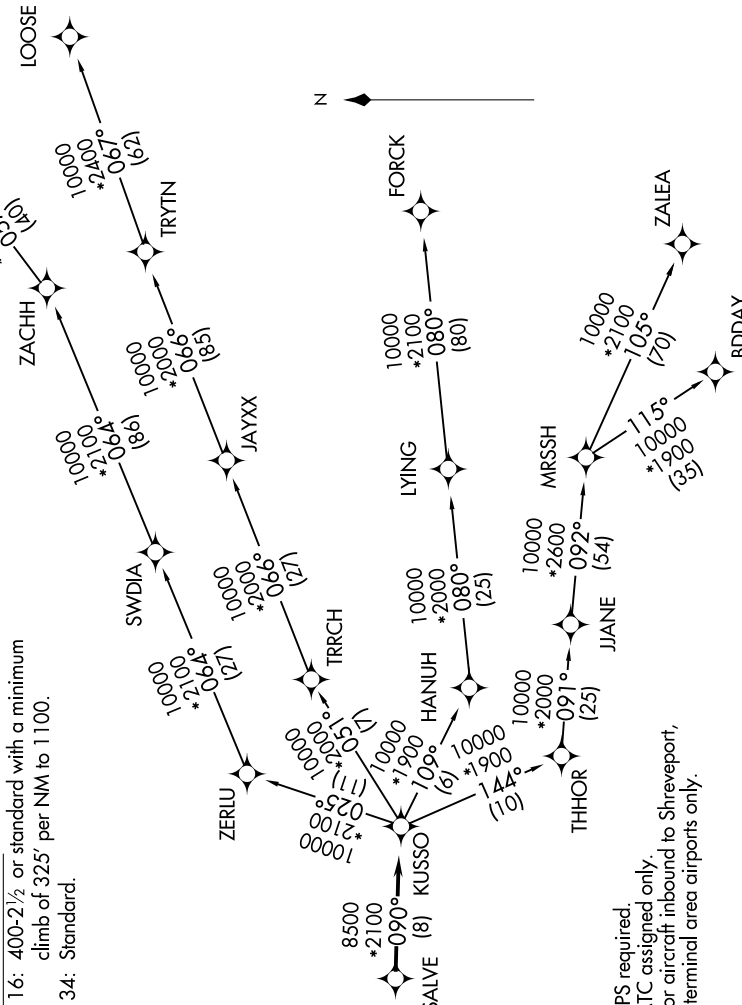
KUSSO ONE DEPARTURE (RNAV)

**TOP ALTITUDE:
ASSIGNED BY ATC**

TAKEOFF MINIMUMS

Rwy 16: 400-2½ or standard with a minimum climb of 325' per NM to 1100.
Rwy 34: Standard.

LONE STAR DEP CON
124.3 282.275
ATIS
133.4
CLINCDL
119.55
GNDCON
121.6
ADDISON TOWER ★
126.0 (CTAF) 239.0



NOTE: RADAR required.
NOTE: RNAV 1.
NOTE: DME/DME/IRU or GPS required.
NOTE: BDDAY Transition: ATC assigned only.
NOTE: MRSSH Transition: For aircraft inbound to Shreveport, Jackson and Monroe terminal area airports only.

(CONTINUED ON FOLLOWING PAGE)

NOTE: Chart not to scale.