

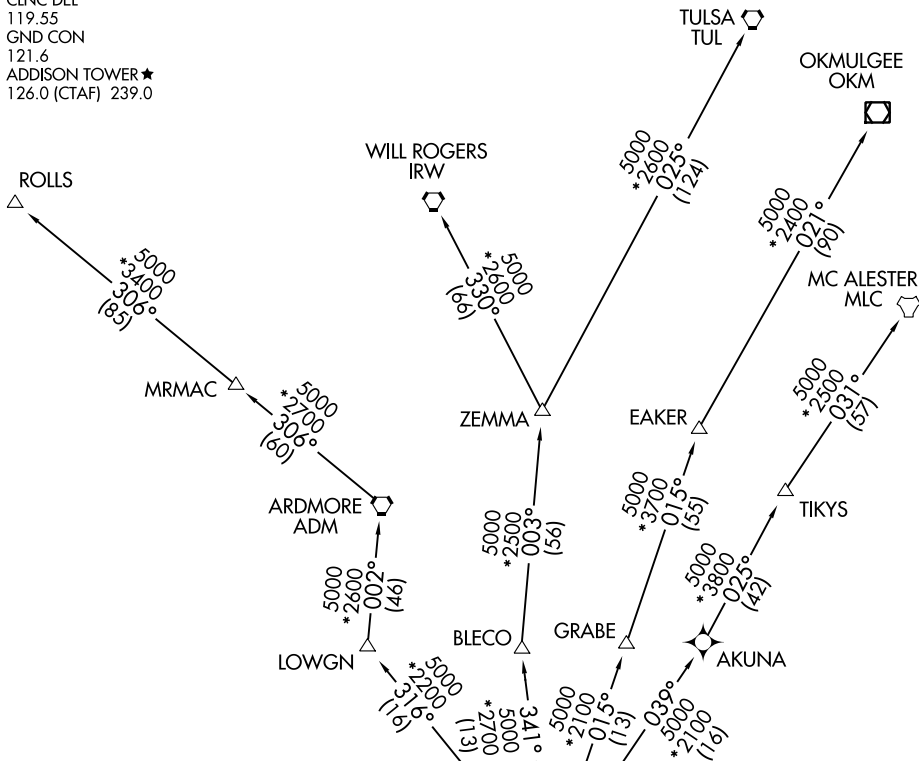
# NANDR TWO DEPARTURE (RNAV)

DALLAS, TEXAS

LONE STAR DEP CON  
124.3 282.275  
ATIS  
133.4  
CLNC DEL  
119.55  
GND CON  
121.6  
ADDISON TOWER ★  
126.0 (CTAF) 239.0

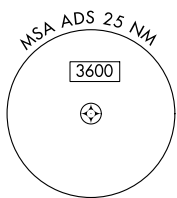
RNAV 1 - DME/DME/IRU or GPS.  
RADAR required.

**TOP ALTITUDE:  
ASSIGNED BY ATC**



### TAKEOFF MINIMUMS

Rwy 34: Standard.  
Rwy 16: 400-2½ or standard with minimum climb of 325' per NM to 1100.



NOTE: EAKER Transition: For TUL terminal arrivals only.  
NOTE: TULSA Transition: For all aircraft overflying TUL VORTAC.  
NOTE: Aircraft arriving to the Oklahoma City terminal area, file and expect the ZEMMA enroute transition.

NOTE: Chart not to scale.

(CONTINUED ON FOLLOWING PAGE)

# NANDR TWO DEPARTURE (RNAV)

(NANDR2.NANDR) 20APR23

DALLAS, TEXAS  
ADDISON (ADS)

SC-2, 26 DEC 2024 to 23 JAN 2025

SC-2, 26 DEC 2024 to 23 JAN 2025