

# TEXOMA FIVE DEPARTURE

LONE STAR DEP CON  
124.3 282.275  
ATIS  
133.4  
CLNC DEL  
119.55  
GND CON  
121.6  
ADDISON TOWER ★  
126.0 (CTAF) 239.0

**TOP ALTITUDE:  
ASSIGNED BY ATC**

TULSA  
114.4 TUL :...:  
Chan 91

RADAR and DME required.

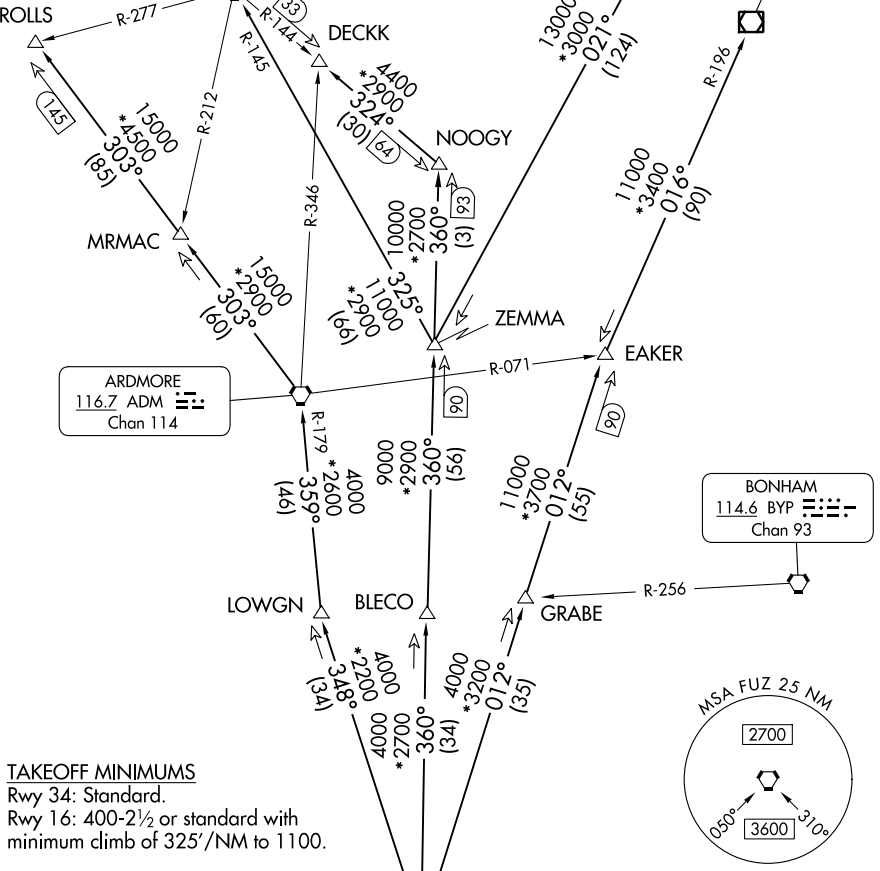
WILL ROGERS  
114.1 IRW :...:  
Chan 88

OKMULGEE  
114.9 OKM :...:  
Chan 96

ARDMORE  
116.7 ADM :...:  
Chan 114

BONHAM  
114.6 BYP :...:  
Chan 93

RANGER  
115.7 FUZ :...:  
Chan 104



**TAKEOFF MINIMUMS**  
Rwy 34: Standard.  
Rwy 16: 400-2½ or standard with  
minimum climb of 325'/NM to 1100.

NOTE: Chart not to scale.

(CONTINUED ON FOLLOWING PAGE)

SC-2, 26 DEC 2024 to 23 JAN 2025

SC-2, 26 DEC 2024 to 23 JAN 2025

# TEXOMA FIVE DEPARTURE