

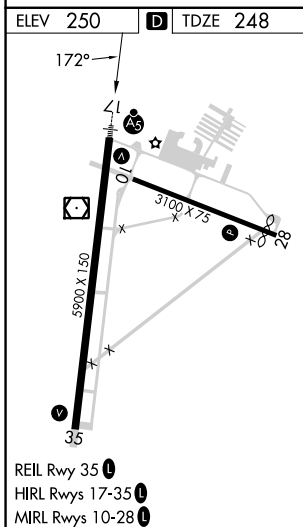
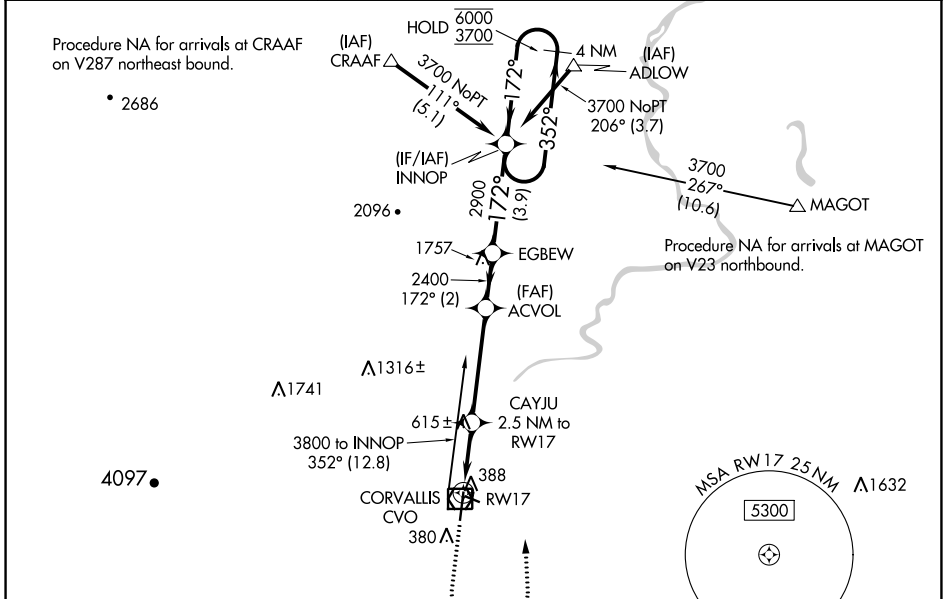
WAAS CH <b>78311</b>	APP CRS <b>172°</b>	Rwy Idg TDZE Apt Elev	<b>5900</b> <b>248</b> <b>250</b>
-------------------------	------------------------	-----------------------------	---

# RNAV (GPS) RWY 17

CORVALLIS MUNI (CVO)

RNP APCH - GPS.	MALSR	MISSED APPROACH: Climb to 1100 then climbing left turn to 3700 direct INNOP and hold, continue climb-in-hold to 3700.
-----------------	-------	---

AWOS-3PT <b>135.775</b>	CASCADE APP CON * <b>127.5 348.7</b>	UNICOM <b>123.075 (CTAF)</b>
----------------------------	---	---------------------------------



ELEV 250	D	TDZE 248		
1100	3700	INNOP		
ACVOL	EGBEW	INNOP		
CAYJU 2.5 NM to RW17	2400	4 NM Holding Pattern		
1.8 NM to RW17	2900	352° → 6000		
1080	2400	← 172° 3700		
1.8 NM	0.7	GP 3.00° TCH 45		
4.1 NM	2 NM			
3.9 NM				
CATEGORY	A	B	C	D
LPV DA	448-1/2		200 (200-1/2)	
LNAV/VNAV DA	571-1/2		323 (400-1/2)	
LNAV MDA	880-1/2 632 (700-1/2)		880-1 3/8 632 (700-1 3/8)	
CIRCLING	880-1 630 (700-1)		920-1 3/4 1080-2 3/4 670 (700-1 3/4) 830 (900-2 3/4)	

NW-1, 26 DEC 2024 to 23 JAN 2025

NW-1, 26 DEC 2024 to 23 JAN 2025