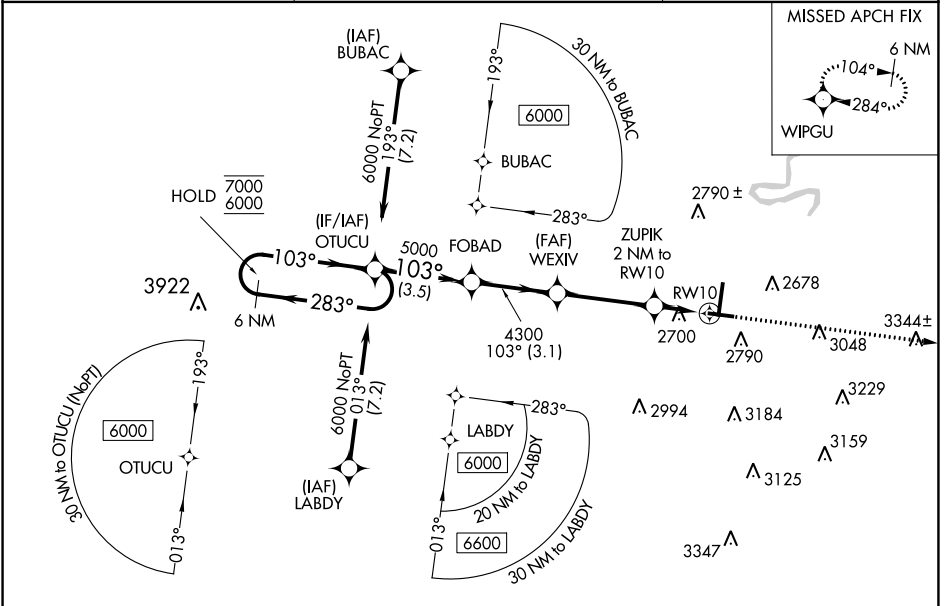


WAAS CH 82023 W10A	APP CRS 103°	Rwy Idg 5001 TDZE 2502 Apt Elev 2504
--	------------------------	---

RNAV (GPS) RWY 10

RALEIGH COUNTY MEML (BKW)

RNP APCH - GPS.		MISSED APPROACH: Climb to 6300 direct WIPGU and hold, continue climb-in-hold to 6300.
▽ ▲	For uncompensated Baro-VNAV systems, LNAV/VNAV NA below -14°C or above 54°C.	
ASOS 121.55	CHARLESTON APP CON 125.4 269.125	UNICOM 123.0 (CTAF) 0



NE-4, 26 DEC 2024 to 23 JAN 2025

NE-4, 26 DEC 2024 to 23 JAN 2025

ELEV 2504		D TDZE 2502	
6 NM Holding Pattern OTUCU		6300 WIPGU	
7000 ← 283° 6000 ← 103°		GP 3.00° TCH 59	
OTUCU		FOBAD	
5000		4300	
3.5 NM		3.1 NM	
WEXIV		ZUPIK	
4300		2 NM to RWY 10	
3180		1.3 NM to RWY 10	
0.7 NM		1.3 NM	
CATEGORY	A	B	C
LPV DA		2702-3/4	200 (200-3/4)
LNAV/VNAV DA		3016-13/8	514 (600-13/8)
LNAV MDA	2960-1	458 (500-1)	2960-13/8 458 (500-13/8)
CIRCLING	3120-1 616 (700-1)	3180-1 676 (700-1)	3320-2 1/2 816 (900-2 1/2) 3500-3 996 (1000-3)

