

WAAS CH 78316 W30A	APP CRS 303°	Rwy Idg TDZE Apt Elev	6007 3169 3178
--	------------------------	-----------------------------	---

RNAV (GPS) RWY 30

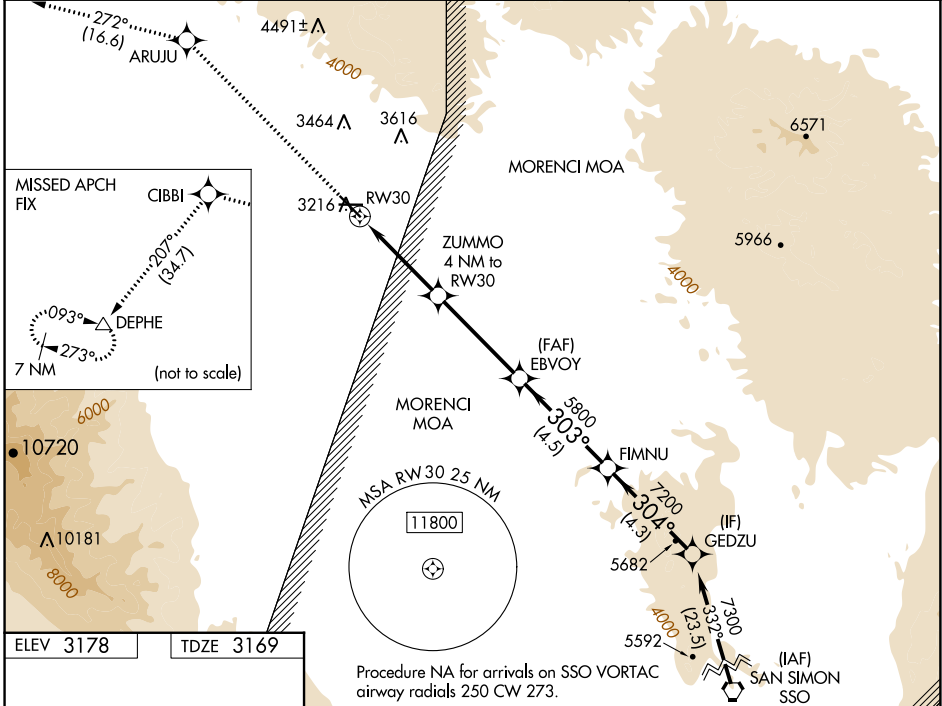
SAFFORD RGNL/1LT DUANE SPALSBURY FLD (SAD)

RNP APCH - GPS.

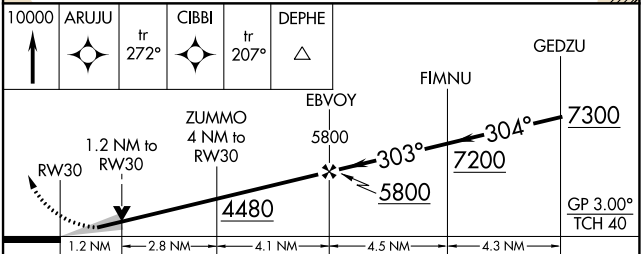
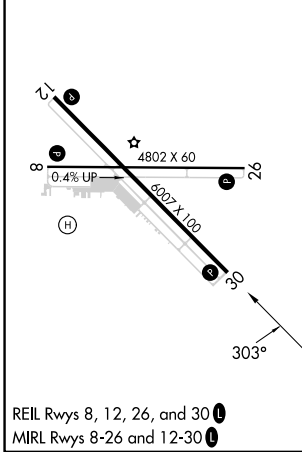
▽ Circling to Rwy 8 NA at night. Circling NA northeast of Rwy 12 and north of Rwy 26. For uncompensated Baro-VNAV systems, LNAV/VNAV NA below -6°C or above 54°C.

△ MISSED APPROACH: Climb to 10000 direct ARUJU and on track 272° to CIBBI and on track 207° to DEPHE and hold.

ASOS 124.175	ALBUQUERQUE CENTER 134.45 327.15	UNICOM 122.8 (CTAF) 0
------------------------	--	---------------------------------



ELEV 3178	TDZE 3169
-----------	-----------



	A	B	C	D
CATEGORY				
LPV DA		3419-3/4	250 (300-3/4)	
LNAV/VNAV DA		3517-1	348 (400-1)	
LNAV MDA	3600-1	431 (500-1)	3600-1 1/4	431 (500-1 1/4)
CIRCLING	3600-1 422 (500-1)	3640-1 462 (500-1)	3640-1 1/2 462 (500-1 1/2)	3900-2 1/4 722 (800-2 1/4)

RNAV (GPS) RWY 30

SW-4, 26 DEC 2024 to 23 JAN 2025

SW-4, 26 DEC 2024 to 23 JAN 2025