

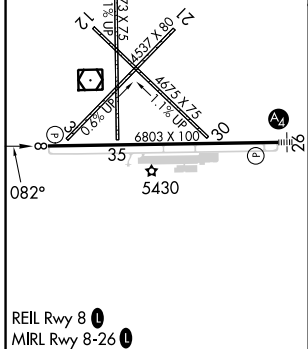
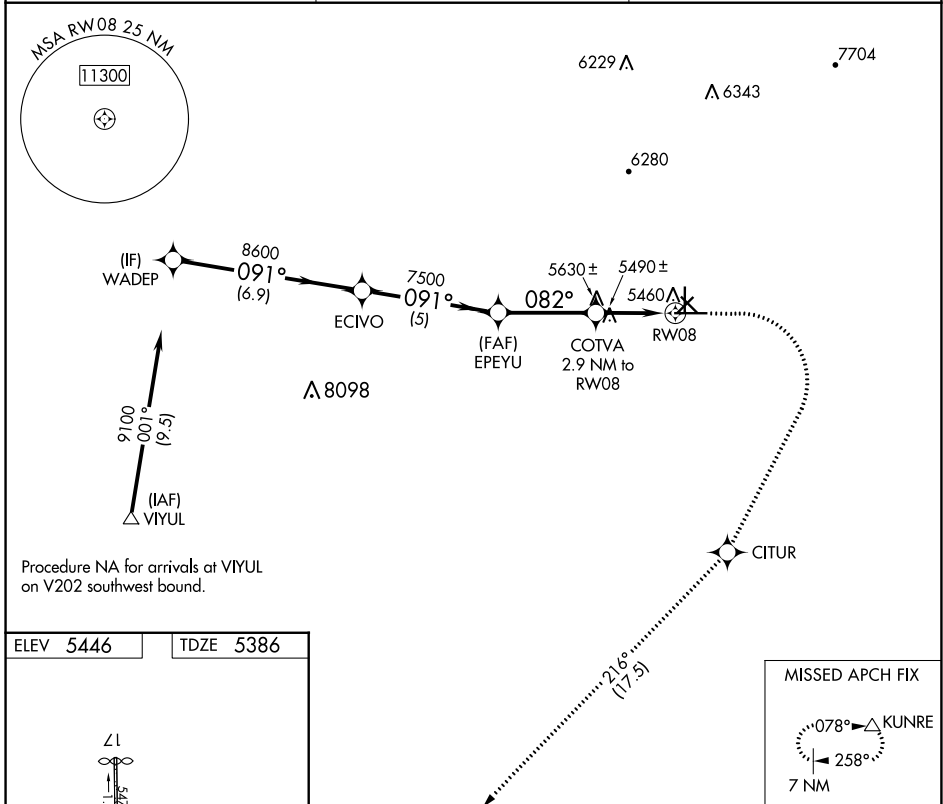
APP CRS	Rwy Idg	6803
082°	TDZE	5386
	Apt Elev	5446

RNAV (GPS) RWY 8

GRANT COUNTY (SVC)

RNP APCH-GPS.	MISSED APPROACH: Climb to 5900 then climbing right turn to 10000 direct CITUR and on track 216° to KUNRE and hold.
▼ ▲ Rwy 8 helicopter visibility reduction below 3/4 SM NA.	

AWOS-3 126.725	ALBUQUERQUE CENTER 134.45 327.15	UNICOM 122.8 (CTAF) ①
--------------------------	--	---------------------------------



5900	10000	CITUR	tr 216°	KUNRE
▲	↷	✧		△

WADEP	ECIVO	EPEYU	COTVA	RW08
9100	8600	7500	6360	
6.9 NM	5 NM	3.5 NM	1.9 NM	1 NM
CATEGORY	A	B	C	D
LNAV MDA	5740-1 354 (300-1)			

SW-1, 26 DEC 2024 to 23 JAN 2025

SW-1, 26 DEC 2024 to 23 JAN 2025