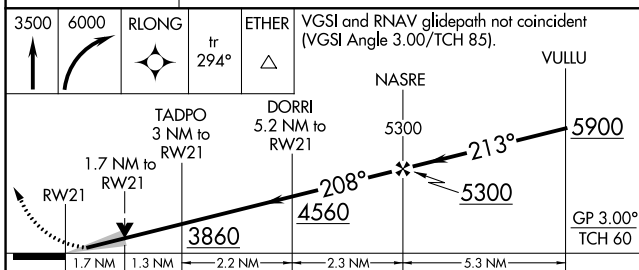
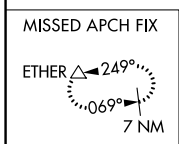
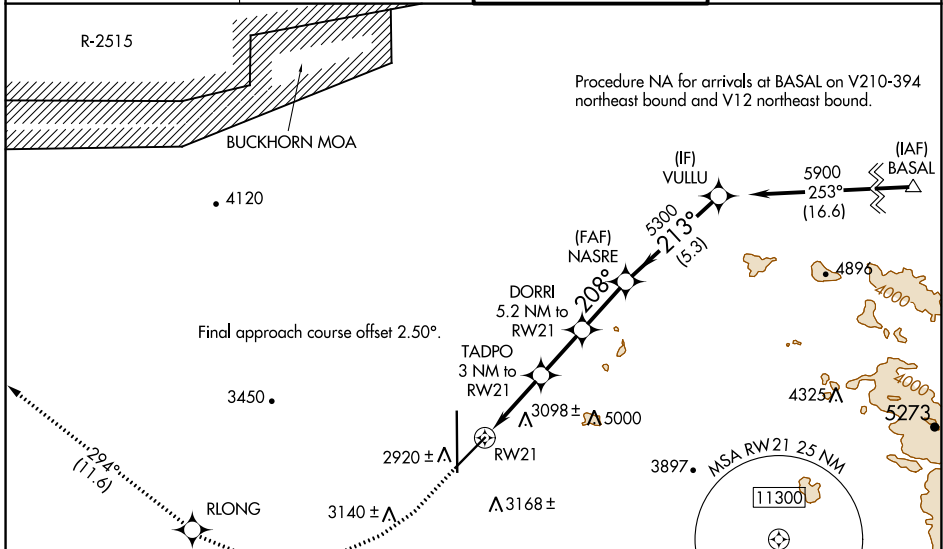


WAAS CH <b>82246</b> <b>W21A</b>	APP CRS <b>208°</b>	Rwy Idg TDZE Apt Elev	<b>9138</b> <b>2858</b> <b>2885</b>
--	------------------------	-----------------------------	---

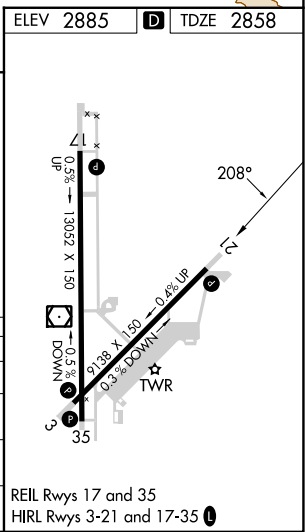
# RNAV (GPS) RWY 21

SOUTHERN CALIFORNIA LOGISTICS (VCV)

RNP APCH - GPS.		MISSED APPROACH: Climb to 3500 then climbing right turn to 6000 direct RLONG and on track 294° to ETHER and hold.	
<p>⚠ Circling NA for C and D southeast of Rwsy 35 and 21. ⚠ For uncompensated Baro-VNAV systems, LNAV/VNAV NA below -20°C or above 54°C.</p>	<p>ATIS ★ <b>135.475</b></p>	<p>JOSHUA APP CON <b>124.55 363.0</b></p>	<p>VICTORVILLE TOWER ★ <b>118.35 (CTAF) 282.225</b></p>
		<p>GND CON <b>124.45</b></p>	



	1.7 NM	1.3 NM	2.2 NM	2.3 NM	5.3 NM
CATEGORY	A	B	C	D	
LPV DA		3108-1	250 (300-1)		
LNAV/VNAV DA		3153-1	295 (300-1)		
LNAV MDA	3480-1	622 (600-1)	3480-1¾	622 (600-1¾)	
CIRCLING	3480-1	595 (600-1)	3480-1¾	3760-2¾	875 (900-2¾)



SW-3, 26 DEC 2024 to 23 JAN 2025

SW-3, 26 DEC 2024 to 23 JAN 2025