

VOR/DME VCV 109.05 Chan 27(Y)	APP CRS 170°	Rwy Idg TDZE Apt Elev 13052 2825 2885
--	------------------------	---

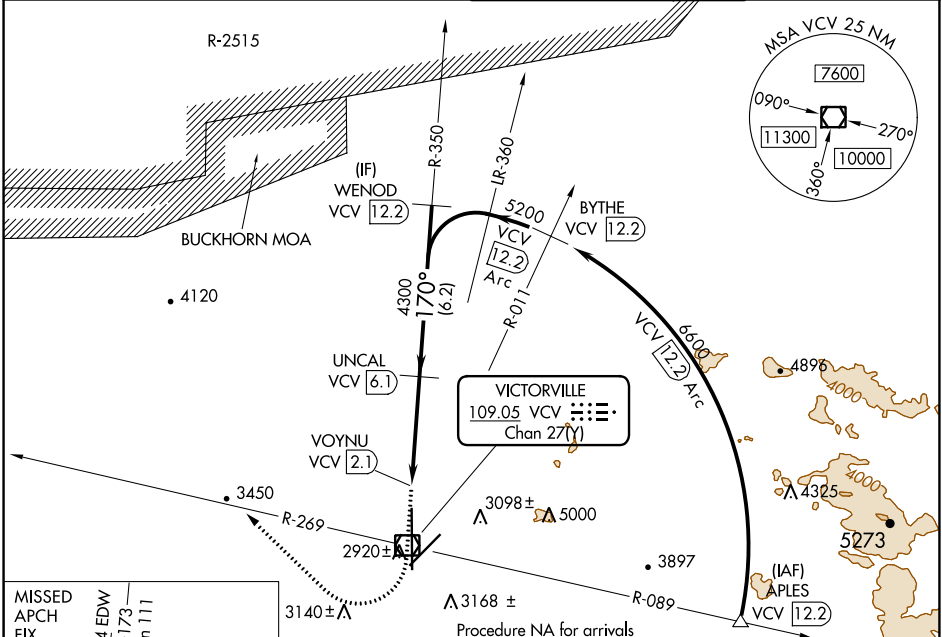
VOR/DME RWY 17

SOUTHERN CALIFORNIA LOGISTICS (VCV)

⚠ When local altimeter setting not received, use Edwards AFB altimeter setting and increase all MDA 160 feet. Increase all visibilities ½ mile. Circling NA for Cats C and D southeast of Rwy 35 and 21.

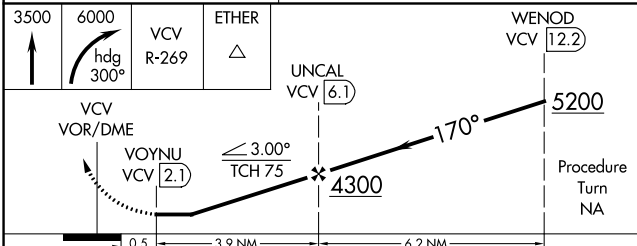
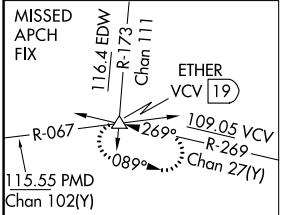
MISSED APPROACH: Climb to 3500, then climbing right turn to 6000 via heading 300° and VCV R-269 to ETHER INT and hold.

ATIS ★ 135.475	JOSHUA APP CON 124.55 363.0	VICTORVILLE TOWER ★ 118.35 (CTAF) 282.225	GND CON 124.45
--------------------------	---------------------------------------	---	--------------------------

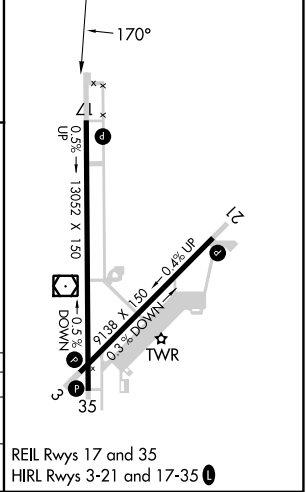


SW-3, 26 DEC 2024 to 23 JAN 2025

SW-3, 26 DEC 2024 to 23 JAN 2025



ELEV	2885	D	TDZE	2825
------	------	---	------	------



CATEGORY	A	B	C	D
S-17	3200/50	375 (400-1)		3200/60 375 (400-1¼)
CIRCLING	3360-1 475 (500-1)	3420-1 535 (600-1)	3580-2 695 (700-2)	3780-3 895 (900-3)

REIL Rwy 17 and 35
HIRL Rwy 3-21 and 17-35