

(CONLE5.CONLE) 24193

AL-804 (FAA)

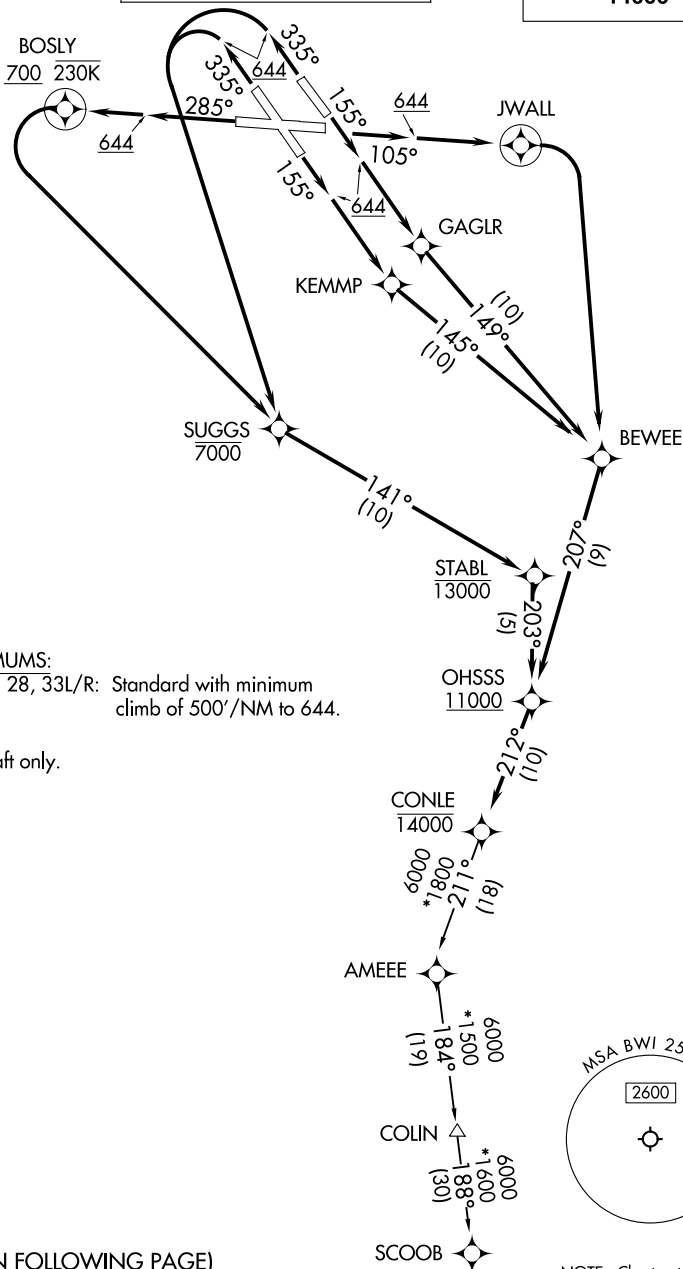
BALTIMORE/
WASHINGTON INTL THURGOOD MARSHALL (BWI)
BALTIMORE, MARYLAND

CONLE FIVE DEPARTURE (RNAV)

POTOMAC DEP CON
124.55 317.425
D-ATIS
115.1 127.8
CLNC DEL
118.05
CPDLC
GND CON
121.9
BALTIMORE TOWER
119.4 257.8

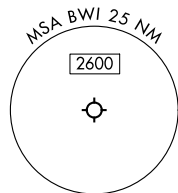
RNAV 1-DME/DME/IRU or GPS.
RADAR required.

**TOP ALTITUDE:
14000**



TAKEOFF MINIMUMS:
Rwys 10, 15L/R, 28, 33L/R: Standard with minimum climb of 500'/NM to 644.

NOTE: Jet aircraft only.



(CONTINUED ON FOLLOWING PAGE)

NOTE: Chart not to scale.

CONLE FIVE DEPARTURE (RNAV)
(CONLE5.CONLE) 11 JUL 24

BALTIMORE/
WASHINGTON INTL THURGOOD MARSHALL (BWI)
BALTIMORE, MARYLAND

NE-3, 26 DEC 2024 to 23 JAN 2025

NE-3, 26 DEC 2024 to 23 JAN 2025