

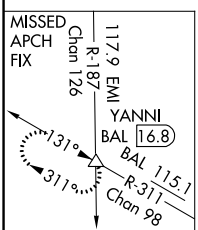
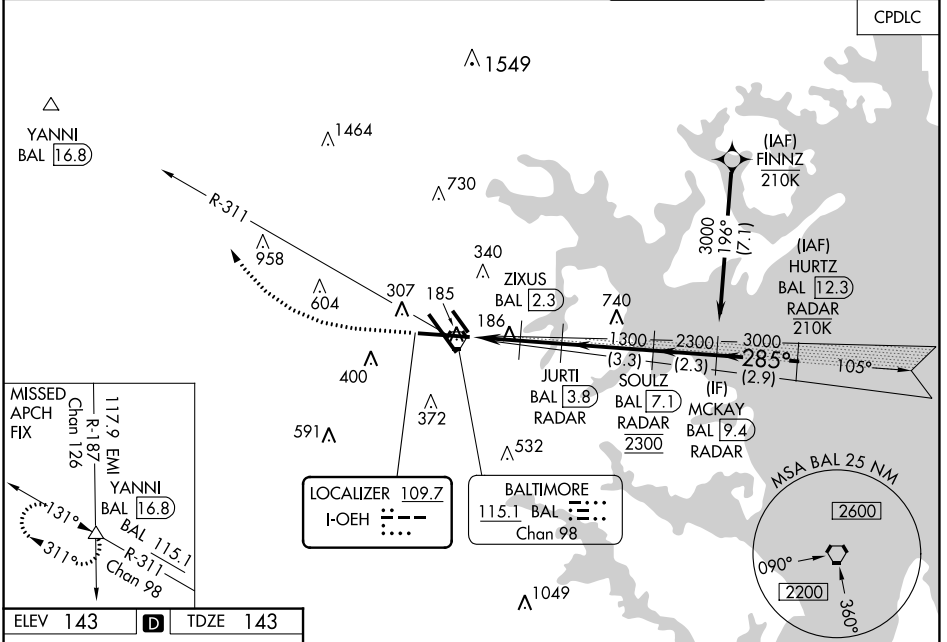
LOC I- OE H	APP CRS	Rwy ldg	9803
109.7	285°	TDZE	143
		Apt Elev	143

BALTIMORE/ WASHINGTON INTL THURGOOD MARSHALL (BWI)

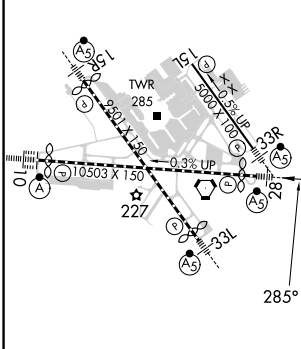
ILS or LOC RWY 28

DME or RADAR required.		MALSR	MISSED APPROACH: Climb to 1500 then climbing right turn to 2600 on heading 319° and BAL VORTAC R-311 to YANNI INT/ BAL 16.8 DME and hold.	
<p>▼ For inop ALS, increase S-LOC 28 Cat C/D visibility to 1 3/8 SM and increase ZIXUS fix S-LOC 28 Cat C/D visibility to RVR 4500.</p> <p>▲ *RVR 1800 authorized with use of FD or AP or HUD to DA.</p>				

D-ATIS	POTOMAC APP CON		BALTIMORE TOWER	GND CON	CLNC DEL
115.1 127.8	119.0 282.275	119.7 290.475 (131°-180°)	119.4 257.8	121.9	118.05
	124.55 317.425 (101°-130°)	128.7 307.9 (181°-019°)			



ELEV 143	D	TDZE 143
----------	----------	----------



1500	2600	BAL	YANNI	VGSI and ILS glidepath not coincident (VGSI Angle 3.00/TCH 75).		MCKAY BAL [9.4] RADAR
		BAL R-311	△	JURTI BAL [3.8] RADAR	SOULZ BAL [7.1] RADAR	MCKAY BAL [9.4] RADAR
		ZIXUS BAL [2.3]	BAL [1.1]	1300	620	1300
		GS 3.00° TCH 55				
CATEGORY	A		B		C	D
S-ILS 28 *	343/24 200 (200-1/2)					
S-LOC 28	620/24		477 (500-1/2)		620/50 477 (500-1)	
C CIRCLING	660-1		517 (600-1)		700-1 1/2 880-2 1/4 557 (600-1 1/2) 737 (800-2 1/4)	
ZIXUS FIX MINIMUMS (DME REQUIRED)						
S-LOC 28	460/24 317 (400-1/2)					
C CIRCLING	660-1		517 (600-1)		700-1 1/2 880-2 1/4 557 (600-1 1/2) 737 (800-2 1/4)	

FAF to MAP 3.5 NM					
Knots	60	90	120	150	180
Min:Sec	3:30	2:20	1:45	1:24	1:10

NE-3, 26 DEC 2024 to 23 JAN 2025

NE-3, 26 DEC 2024 to 23 JAN 2025