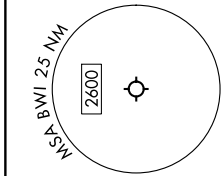


(LINSE1 .LINSE) 24193

LINSE ONE DEPARTURE (RNAV)

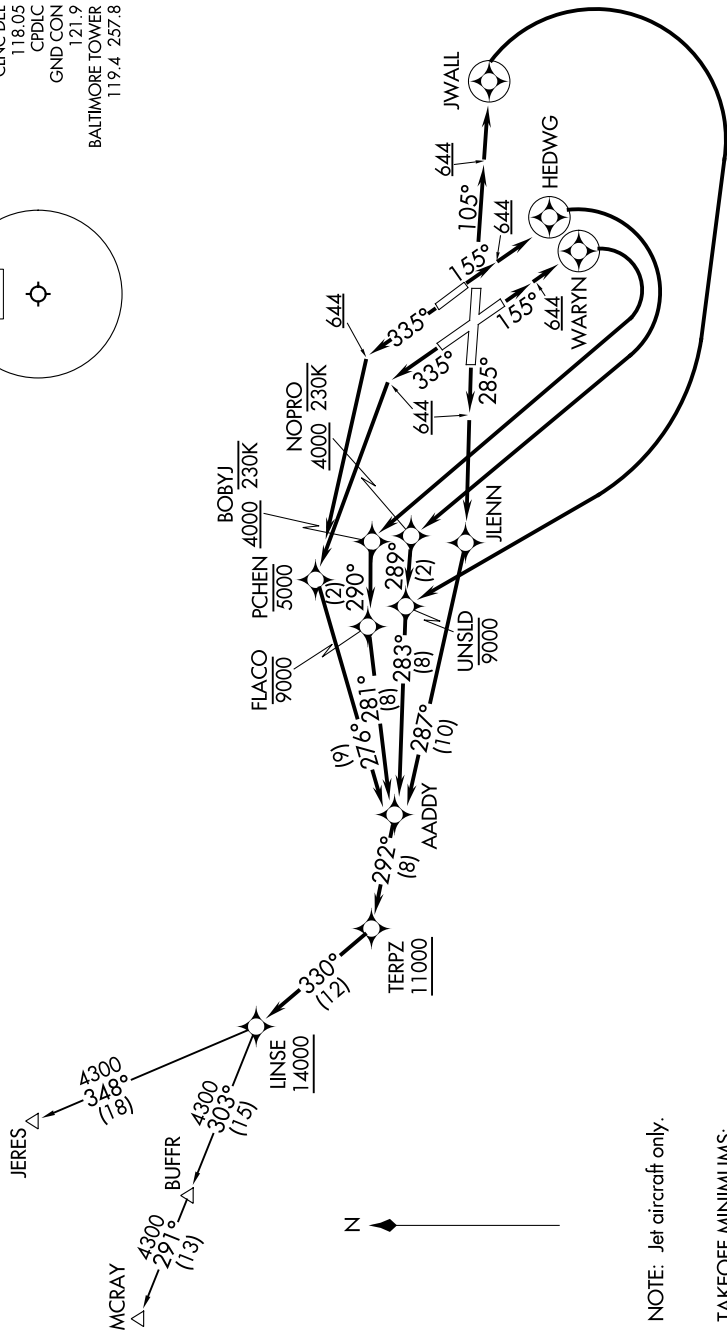
BALTIMORE/
WASHINGTON INTL THURGOOD MARSHALL (BWI)
BALTIMORE, MARYLAND
AL-804 (FAA)

POTOMAC DEP CON
128.7 307.9
D-ATIS
115.1 127.8
CLNC DEL
118.05
CPDIC
GND CON
121.9
BALTIMORE TOWER
119.4 257.8



RNAV 1 - DME/DME/IRU or GPS.
RADAR required.

TOP ALTITUDE:
16000



NOTE: Jet aircraft only.

TAKEOFF MINIMUMS:
Rwy 15R: Standard with minimum climb of 780'/NM to 644.
Rwys 10, 15L, 28, 33L/R: Standard with minimum climb of 500'/NM to 644.

(CONTINUED ON FOLLOWING PAGE)

NOTE: Chart not to scale.

LINSE ONE DEPARTURE (RNAV)
(LINSE1 .LINSE) 11 JUL 24

BALTIMORE/
WASHINGTON INTL THURGOOD MARSHALL (BWI)
BALTIMORE, MARYLAND

NE-3, 26 DEC 2024 to 23 JAN 2025

NE-3, 26 DEC 2024 to 23 JAN 2025