

WAAS CH 48926 W05A	APP CRS 049°	Rwy Idg TDZE Apt Elev	6573 1654 1663
--	------------------------	-----------------------------	---

RNAV (GPS) RWY 5

ADIRONDACK RGNL (SLK)

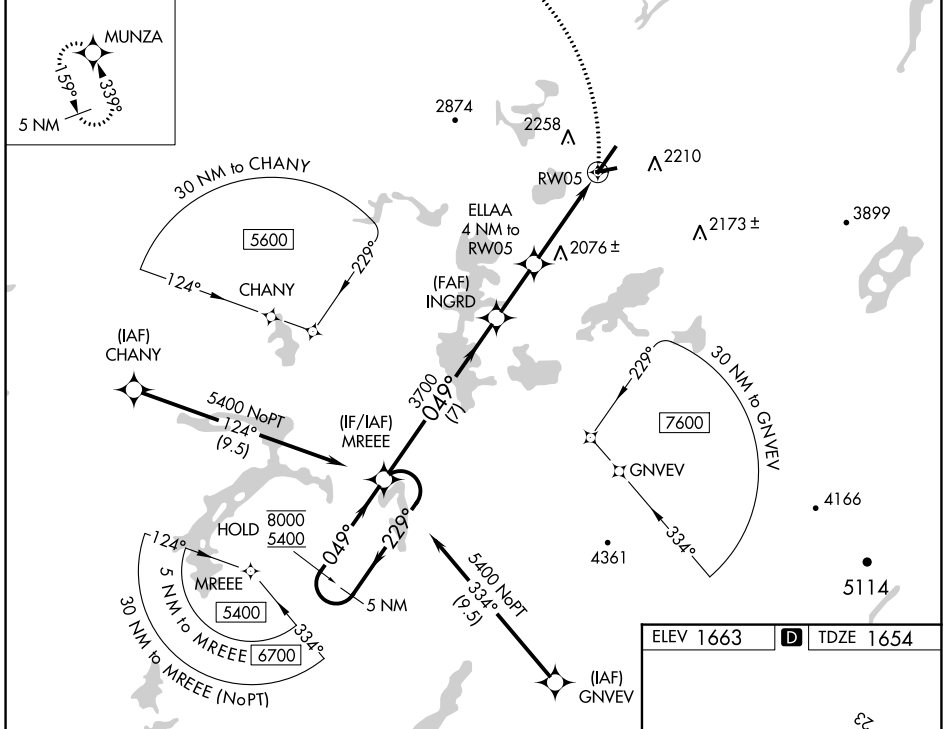
RNP APCH-GPS.

⚠ Circling Rwy 5, 9, 27 NA at night. Rwy 5 helicopter visibility reduction below 1 SM NA. Rwy 5 straight-in minimums NA at night.
🌡 -29°C

MISSED APPROACH: Climbing left turn to 6000 direct MUNZA and hold, continue climb-in-hold to 6000.

ASOS 124.175	BOSTON CENTER 120.35 342.25	UNICOM 123.0 (CTAF) 0
------------------------	---------------------------------------	---------------------------------

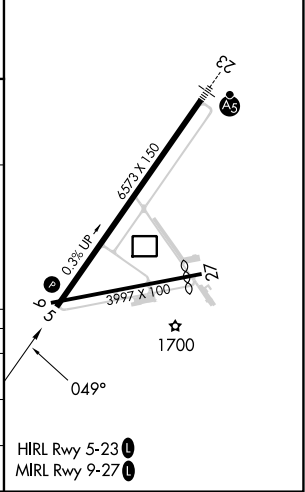
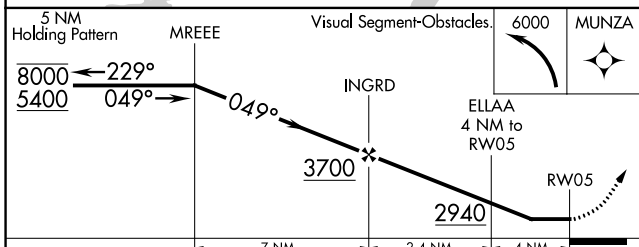
MISSED APCH FIX



NE-2, 26 DEC 2024 to 23 JAN 2025

NE-2, 26 DEC 2024 to 23 JAN 2025

ELEV 1663	D TDZE 1654
-----------	--------------------



CATEGORY	A	B	C	D
LP MDA	2420-1 766 (800-1)	2420-1 1/4 766 (800-1 1/4)	2420-2 1/2	766 (800-2 1/2)
LNAV MDA	2540-1 1/4	886 (900-1 1/4)	2540-2 1/2	886 (900-2 1/2)
C CIRCLING	2540-1 1/4 877 (900-1 1/4)	2660-1 1/2 997 (1000-1 1/2)	2660-3 997 (1000-3)	2680-3 1017 (1100-3)

HIRL Rwy 5-23 **0**
MIRL Rwy 9-27 **0**