

(LBY2.LBY) 24025

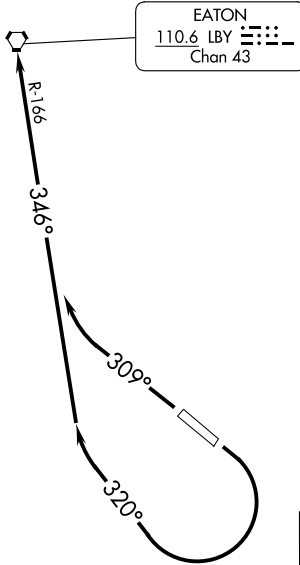
AL-853 (FAA)

HATTIESBURG BOBBY L CHAIN MUNI (HBG)  
HATTIESBURG, MISSISSIPPI

# EATON TWO DEPARTURE

ASOS 135.425  
HOUSTON CENTER  
126.8 327.8  
CTAF 122.8

**TOP ALTITUDE:  
3000**



EATON  
110.6 LBV   
Chan 43

**TAKEOFF MINIMUMS:**

Rwy 13: ATC climb of 300' per NM to 600.

Rwy 13: Do not exceed 230K until established on heading 320°.

Rwy 31: Standard.

NOTE: Chart not to scale.

SC-4, 26 DEC 2024 to 23 JAN 2025

SC-4, 26 DEC 2024 to 23 JAN 2025



## DEPARTURE ROUTE DESCRIPTION

TAKEOFF RUNWAY 13: Climbing right turn heading 320° and LBV VORTAC R-166 to LBV VORTAC. Thence. . .

TAKEOFF RUNWAY 31: Climb heading 309° and LBV VORTAC R-166 to LBV VORTAC. Thence. . .

. . . maintain 3000 or ATC assigned altitude. Expect clearance to filed altitude 10 minutes after departure.

# EATON TWO DEPARTURE

(LBY2.LBY) 21JUL16

HATTIESBURG, MISSISSIPPI  
HATTIESBURG BOBBY L CHAIN MUNI (HBG)