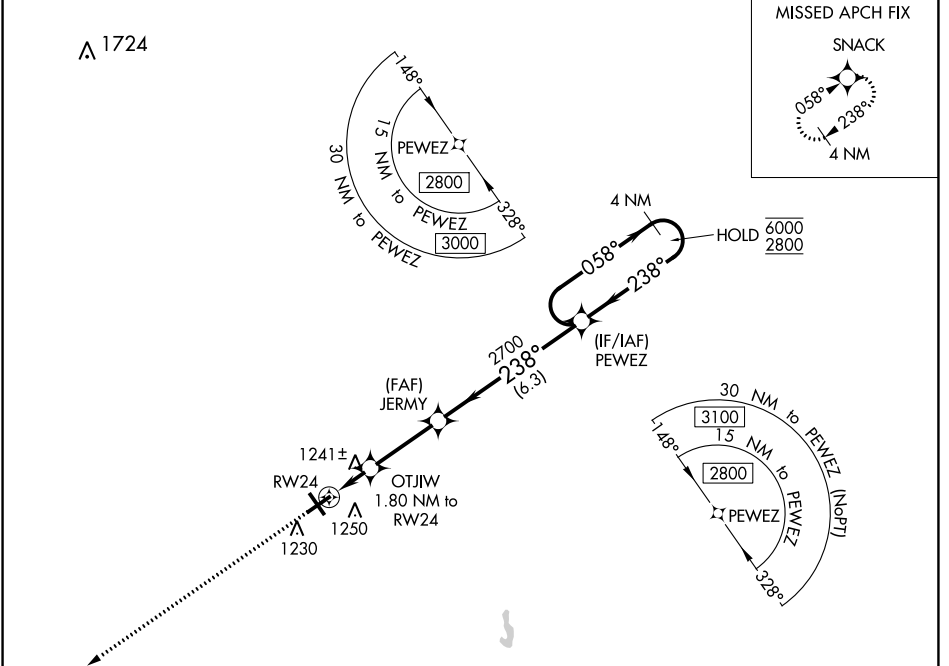


WAAS CH 82112 W24A	APP CRS 238°	Rwy Idg 5500 TDZE 1139 Apt Elev 1140
--	------------------------	---

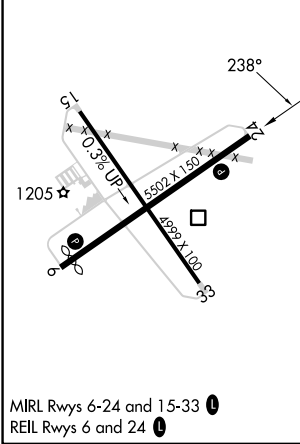
RNAV (GPS) RWY 24

RICHMOND MUNI (RID)

RNP APCH.			MISSED APPROACH: Climb to 2800 direct SNACK and hold.
<p>▼ Circling Rwy 15 NA at night. For uncompensated Baro-VNAV systems, ▲ NA LNAV/VNAV NA below -17°C or above 54°C.</p>			
AWOS-3 121.225	COLUMBUS APP CON 134.45 352.05	CLNC DEL 133.55	UNICOM 122.7 (CTAF) 0



ELEV 1140	D	TDZE 1139
-----------	----------	-----------



2800	SNACK	OTJIW 1.8 NM to RW24	JERMY 2700	PEWEZ 4 NM Holding Pattern
*LNAV only.		*1 NM to RW24	*1740	GP 3.00° TCH 48
		1 NM	0.8	3 NM
				6.3 NM
2800	SNACK	OTJIW 1.8 NM to RW24	JERMY 2700	PEWEZ 4 NM Holding Pattern
				058° → 6000 ← 238° 2800
				GP 3.00° TCH 48
CATEGORY	A	B	C	D
LPV DA		1339-3/4	200 (200-3/4)	
LNAV/VNAV DA		1409-7/8	270 (300-7/8)	
LNAV MDA		1500-1	361 (400-1)	
C CIRCLING	1600-1	460 (500-1)	1600-1 1/2 460 (500-1 1/2)	1700-2 560 (600-2)

EC-2, 26 DEC 2024 to 23 JAN 2025

EC-2, 26 DEC 2024 to 23 JAN 2025