
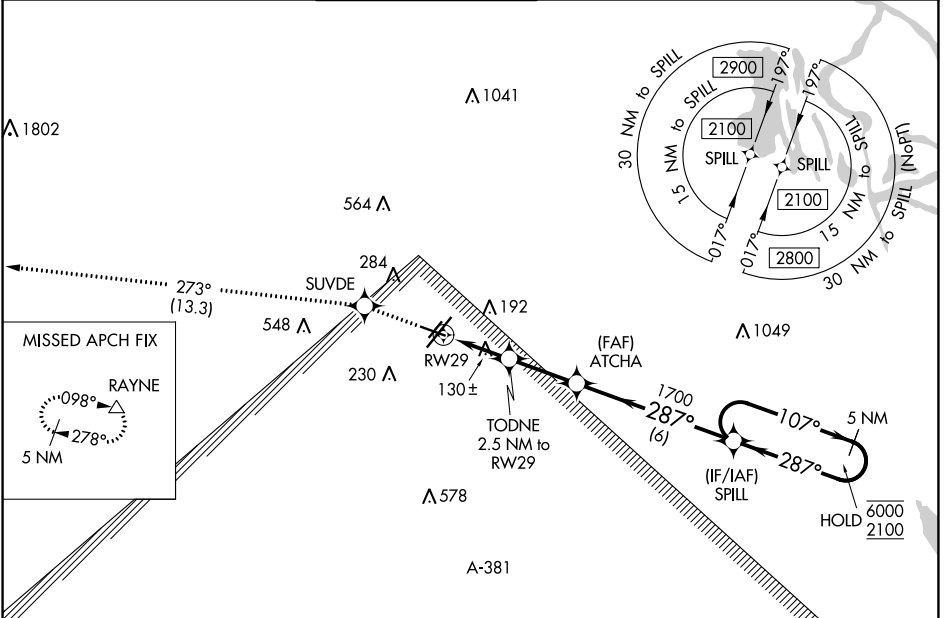


WAAS CH 45703 W29A	APP CRS 287°	Rwy ldg 5150 TDZE 42 Apt Elev 42
--	------------------------	---

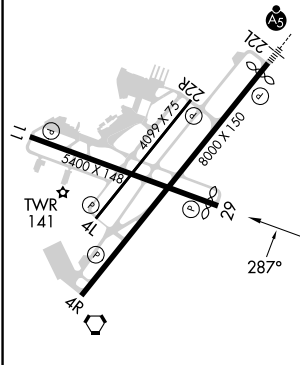
RNAV (GPS) RWY 29

LAFAYETTE RGNL/PAUL FOURNET FLD (L.F'T')

RNP APCH.		MISSED APPROACH: Climb to 2800 direct SUVDE and on track 273° to RAYNE and hold.			
 Rwy 29 helicopter visibility reduction below 3/4 SM NA. For uncompensated Baro-VNAV systems, LNAV/VNAV NA below -2°C or above 54°C.					
ATIS 134.05	LAFAYETTE APP CON ★ 121.1 363.0	LAFAYETTE TOWER ★ 118.5 (CTAF) 0 257.8	GND CON 121.8	CLNC DEL 125.55	UNICOM 122.95



ELEV 42	D	TDZE 42
---------	----------	---------



2800	SUVDE	fr 273°	RAYNE	5 NM Holding Pattern	
*LNAV only.		TODNE 2.5 NM to RWY29	ATCHA 1700	107°	6000 / 2100
*0.9 NM to RWY29		*880	1700	287°	GP 3.00° TCH 51
0.9		1.6	2.6 NM	6 NM	
CATEGORY	A		B	C	D
LPV DA	292-3/4		250 (300-3/4)		
LNAV/VNAV DA	292-3/4		250 (300-3/4)		
LNAV MDA	380-1		338 (400-1)		
C CIRCLING	500-1 458 (500-1)	580-1 538 (600-1)	700-1 3/4 658 (700-1 3/4)	700-2 658 (700-2)	

REIL Rws 4L, 4R, 11, 22R and 29
MIRL Rwy 11-29 and 4L-22R
HIRL Rwy 4R-22L

SC-4, 26 DEC 2024 to 23 JAN 2025

SC-4, 26 DEC 2024 to 23 JAN 2025