

LOC I-SGZ <b>109.9</b>	APP CRS <b>002°</b>	Rwy Idg <b>8201</b>	TDZE <b>684</b>
		Apt Elev <b>695</b>	

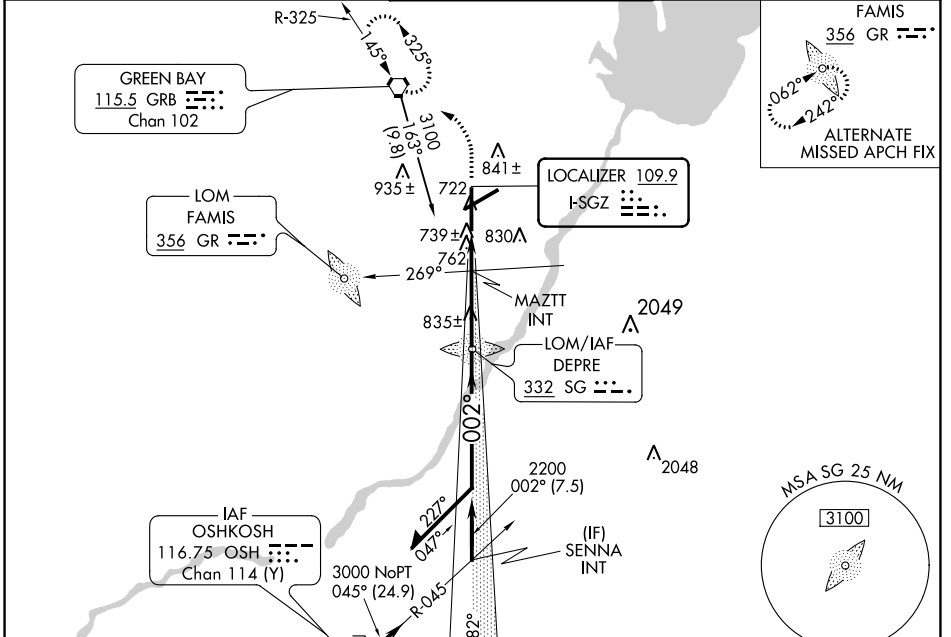
# ILS or LOC RWY 36

GREEN BAY/AUSTIN STRAUBEL INTL (GRB)

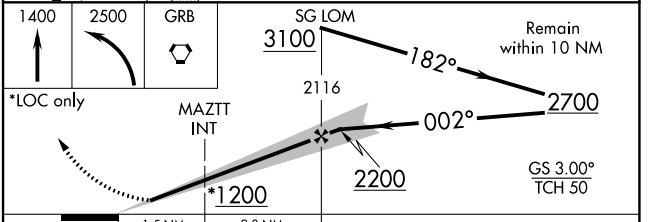
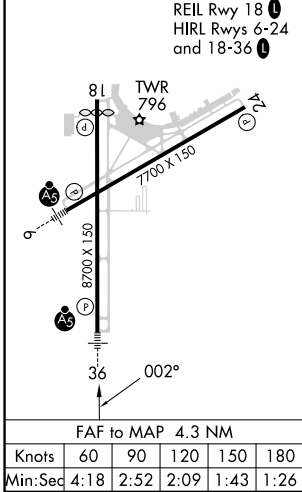
**NA** For inop ALS, increase S-LOC 36 Cats C/D visibility to 1 3/8 SM. **MALSR** MISSED APPROACH: Climb to 1400 then climbing left turn to 2500 direct GRB VORTAC and hold.

**ASR** \*\*RVR 1800 authorized with the use of FD or AP or HUD to DA.

ATIS <b>124.1</b>	GREEN BAY APP CON * <b>119.4 338.2</b>	GREEN BAY TOWER * <b>118.7 (CTAF) 257.8</b>	GND CON <b>121.9</b>	CLNC DEL <b>121.75</b>
----------------------	---	--	-------------------------	---------------------------



ELEV 695	<b>D</b> TDZE 684
----------	-------------------



CATEGORY	MAZZT FIX MINIMUMS			
	A	B	C	D
S-ILS 36	**884/24 200 (200-1/2)			
S-LOC 36	1200/24	516 (600-1/2)	1200/55	516 (600-1)
<b>C</b> CIRCLING	1200-1	505 (600-1)	1300-1 3/4 605 (700-1 3/4)	1300-2 605 (700-2)
S-LOC 36	1020/24	336 (400-1/2)	1020/26	336 (400-1/2)
<b>C</b> CIRCLING	1200-1	505 (600-1)	1200-1 1/2 505 (600-1 1/2)	1260-2 565 (600-2)

EC-3, 26 DEC 2024 to 23 JAN 2025

EC-3, 26 DEC 2024 to 23 JAN 2025