

VORTAC RAP <b>112.3</b> Chan <b>70</b>	APP CRS <b>141°</b>	Rwy ldg <b>8701</b> TDZE <b>3191</b> Apt Elev <b>3204</b>
----------------------------------------------	------------------------	-----------------------------------------------------------------

# VOR or TACAN RWY 14

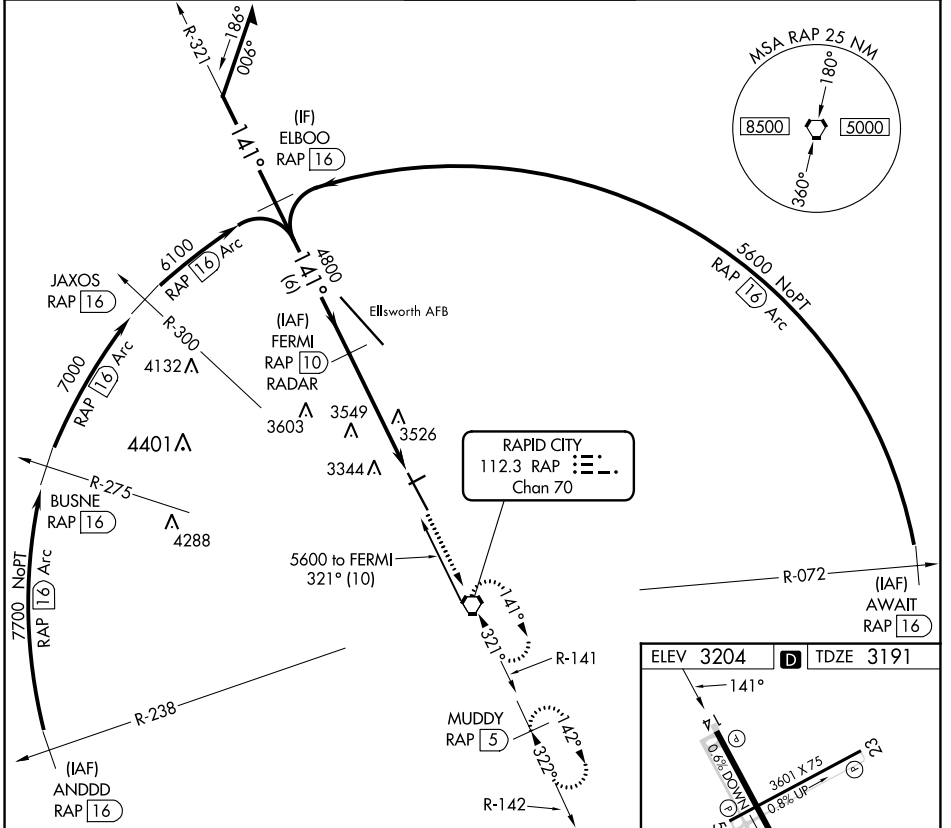
RAPID CITY RGNL (RAP)

DME or RADAR required.

MISSED APPROACH: Climb to 5600 direct RAP VORTAC and hold, continue climb-in-hold to 5600. (TACAN aircraft continue on RAP R-142 to MUDDY 5 DME and hold SE, RT, 322° inbound.)

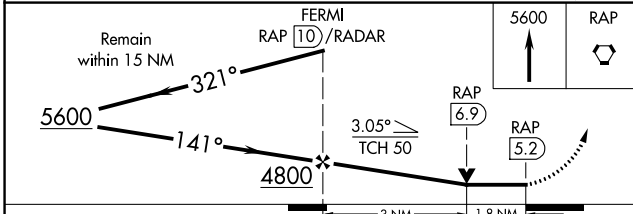
Rwy 14 helicopter visibility reduction below 3/4 SM NA.

ASOS <b>118.525</b>	ELLSWORTH APP CON* <b>119.5 259.1</b>	RAPID CITY TOWER* <b>125.85 (CTAF) 257.8</b>	GND CON <b>121.9</b>	UNICOM <b>122.95</b>
------------------------	------------------------------------------	-------------------------------------------------	-------------------------	-------------------------



NC-1, 26 DEC 2024 to 23 JAN 2025

NC-1, 26 DEC 2024 to 23 JAN 2025



ELEV 3204	TDZE 3191
-----------	-----------

REIL Rwy 14	MIRL Rwy 5-23	HIRL Rwy 14-32
-------------	---------------	----------------

FAF to MAP 4.8 NM

Knots	60	90	120	150	180
Min:Sec	4:48	3:12	2:24	1:55	1:36

CATEGORY	A	B	C	D	E
S-14	3800-1	609 (600-1)	3800-1 3/4	609 (600-1 3/4)	3800-2
CIRCLING	3800-1 596 (600-1)	3840-1 636 (700-1)	3860-1 3/4 656 (700-1 3/4)	3940-2 1/4 736 (800-2 1/4)	3960-2 3/4 756 (800-2 3/4)