

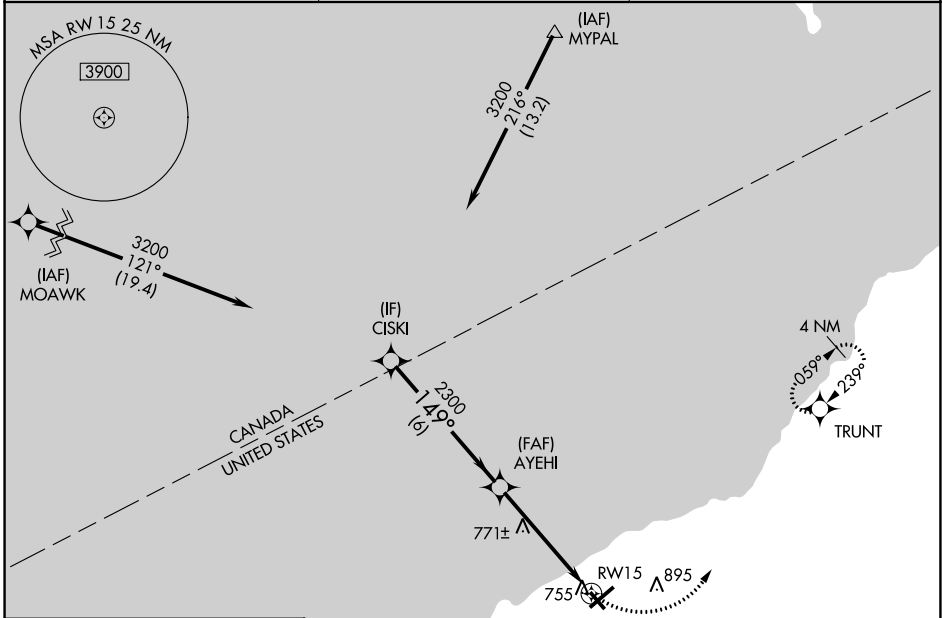
APP CRS	Rwy Idg	4000
149°	TDZE	684
	Apt Elev	692

RNAV (GPS) RWY 15

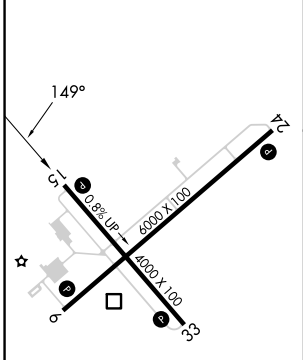
CHAUTAUGUA COUNTY/DUNKIRK (DKK)

RNP APCH.	<p>⚠ Circling to Rwy 6, 24, 33 NA at night.</p> <p>⚠ Circling Cat D NA southeast of Rwy 6 and southwest of Rwy 33.</p> <p>⚠ Rwy 15 helicopter visibility reduction below $\frac{3}{4}$ SM NA.</p>	<p>MISSED APPROACH: Climbing left turn to 3200 direct TRUNT and hold, continue climb-in-hold to 3200.</p>
-----------	--	---

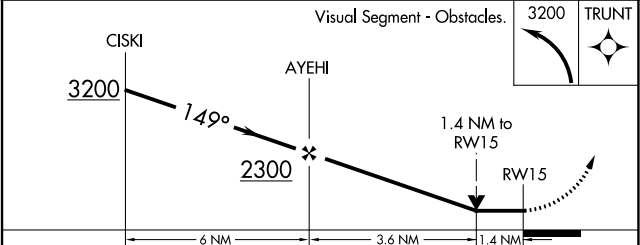
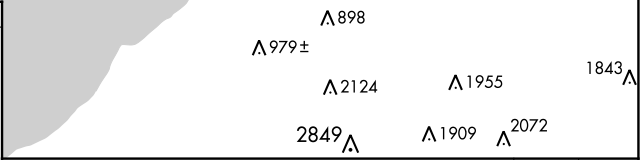
ASOS 119.275	BUFFALO APP CON 126.5 317.6	UNICOM 123.075 (CTAF) 0
------------------------	---------------------------------------	-----------------------------------



ELEV 692	TDZE 684
----------	----------



MIRL Rwy 15-33	ⓘ
REIL Rwy 6 and 24	ⓘ
HIRL Rwy 6-24	ⓘ



CATEGORY	A	B	C	D
LNAV MDA	1140-1	456 (500-1)	1140-1 $\frac{3}{8}$	456 (500-1 $\frac{3}{8}$)
C CIRCLING	1200-1 508 (600-1)	1320-1 628 (700-1)	1640-2 $\frac{3}{4}$ 948 (1000-2 $\frac{3}{4}$)	2140-3 1448 (1500-3)

NE-2, 26 DEC 2024 to 23 JAN 2025

NE-2, 26 DEC 2024 to 23 JAN 2025