

LOC/DME I-MWP <b>109.1</b> Chan <b>28</b>	APP CRS <b>059°</b>	Rwy Idg TDZE Apt Elev	<b>7003</b> <b>238</b> <b>258</b>
---	------------------------	-----------------------------	---

# LOC RWY 6

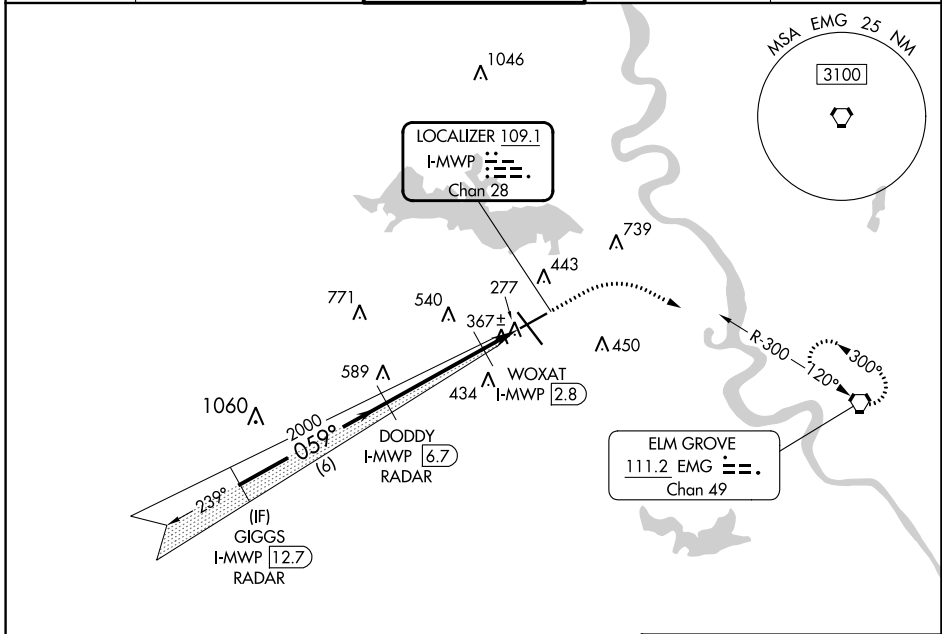
SHREVEPORT RGNL (SHV)

RADAR required for procedure entry. RADAR or DME required.

ASR Rwy 6 helicopter visibility reduction below 3/4 SM NA.

MISSED APPROACH: Climb to 700 then climbing right turn to 2000 direct EMG VORTAC and hold.

ATIS <b>128.45</b>	SHREVEPORT APP CON <b>119.9 335.55</b>	SHREVEPORT TOWER <b>121.4 236.775</b>	GND CON <b>121.175 236.775</b>	CLNC DEL <b>124.65</b>
-----------------------	---	--	-----------------------------------	---------------------------



	GIGGS I-MWP RADAR (12.7)		DODDY I-MWP RADAR (6.7)		WOXAT I-MWP (2.8)		I-MWP (1.4)		EMG	
	2000		2000		740		740		700	
	059°		059°		3.00° TCH 51		1.4		2000	
	6 NM		4 NM							
CATEGORY	A	B	C	D	E					
S-LOC 6	740-1	502 (500-1)	740-1 3/8		502 (500-1 3/8)					
CIRCLING	760-1	502 (600-1)	980-2	1100-2 3/4	1100-3					
			722 (800-2)	842 (900-2 3/4)	842 (900-3)					
WOXAT FIX MINIMUMS										
S-LOC 6	620-1	382 (400-1)	620-1 1/8		382 (400-1 1/8)					
CIRCLING	760-1	502 (600-1)	980-2	1100-2 3/4	1100-3					
			722 (800-2)	842 (900-2 3/4)	842 (900-3)					

ELEV 258	TDZE 238
REIL Rwy 6 and 24	
HIRL Rwy 14-32	
MIRL Rwy 6-24	
TDZ/CL Rwy 14	
FAF to MAP 5.4 NM	
Knots	60 90 120 150 180
Min:Sec	5:24 3:36 2:42 2:10 1:48

SC-4, 26 DEC 2024 to 23 JAN 2025

SC-4, 26 DEC 2024 to 23 JAN 2025