

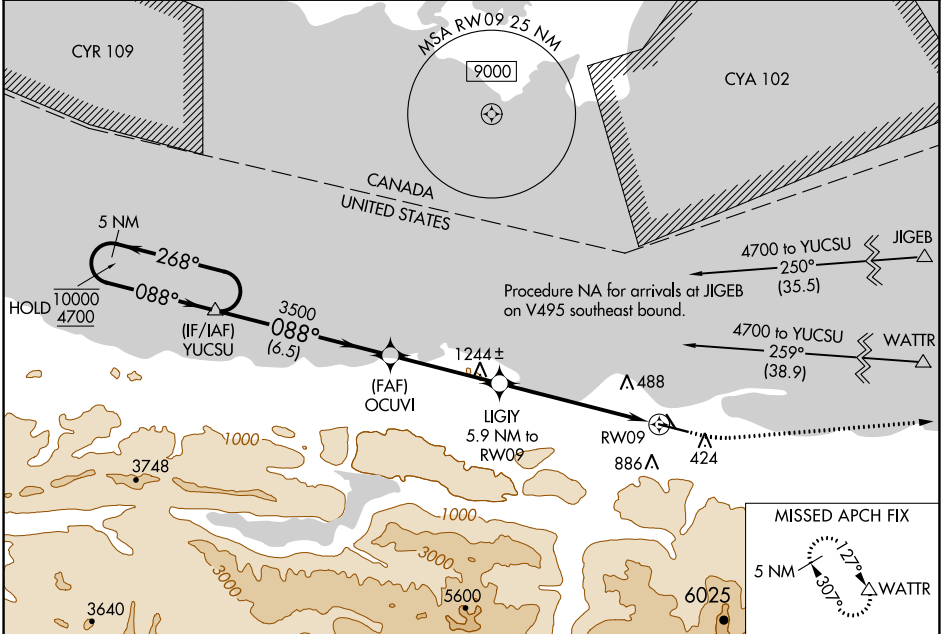
WAAS CH <b>7703</b> <b>W09A</b>	APP CRS <b>088°</b>	Rwy ldg <b>6347</b> TDZE <b>285</b> Apt Elev <b>291</b>
---------------------------------------	------------------------	---

# RNAV (GPS) RWY 9

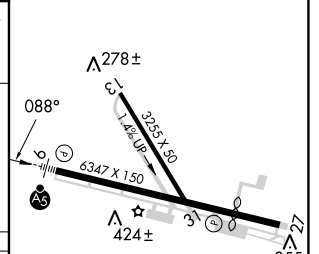
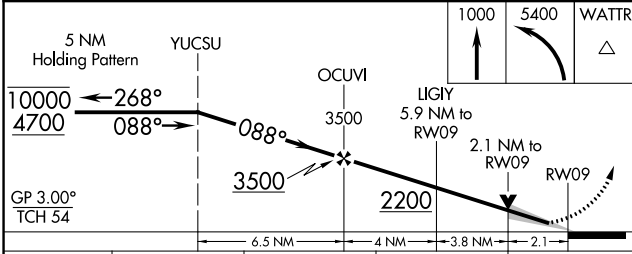
WILLIAM R FAIRCHILD INTL (CLM)

RNP APCH - GPS.	MALSR 	MISSED APPROACH: Climb to 1000 then climbing left turn to 5400 direct WATTR and hold, continue climb-in-hold to 5400.
Circling Rwy 13, 31 NA at night. Baro-VNAV NA. For inop ALS, increase LNAV/VNAV all Cats visibility to 1 3/8 SM and LNAV Cat C/D visibility to 1 7/8 SM. Circling NA south of Rwy 9-27.		

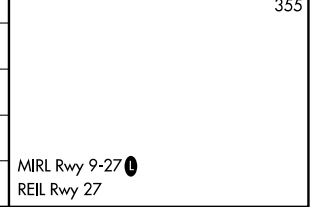
ASOS <b>135.175</b>	WHIDBEY APP CON <b>118.2 285.65</b>	CLNC DEL <b>124.15</b>	UNICOM <b>122.975 (CTAF)</b>
------------------------	--	---------------------------	---------------------------------



ELEV 291	TDZE 285
----------	----------



CATEGORY	A	B	C	D
LPV DA	505-1/2		220 (300-1/2)	
LNAV/VNAV DA	757-1 1/8		472 (500-1 1/8)	
LNAV MDA	960-1/2	675 (700-1/2)	960-1 1/2	675 (700-1 1/2)
CIRCLING	960-1	669 (700-1)	960-1 7/8	1000-2 1/4
			669 (700-1 7/8)	709 (800-2 1/4)



NW-1, 26 DEC 2024 to 23 JAN 2025

NW-1, 26 DEC 2024 to 23 JAN 2025