

APP CRS	Rwy Idg	<b>3510</b>
<b>301°</b>	TDZE	<b>2974</b>
	Apt Elev	<b>2977</b>

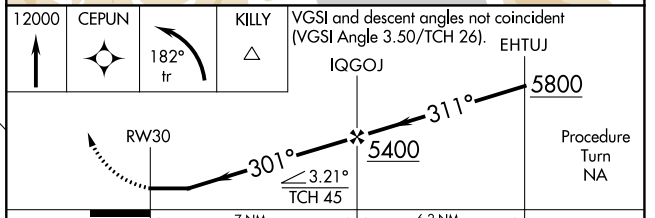
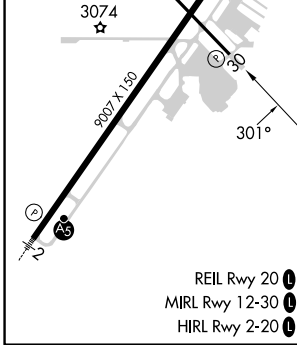
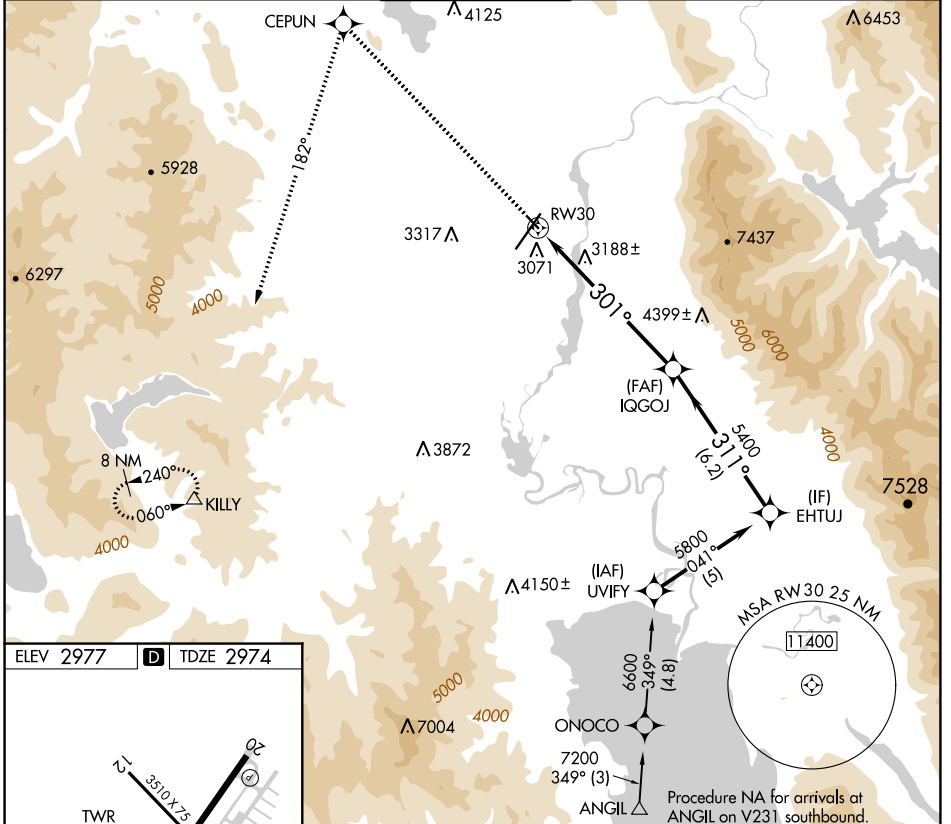
# RNAV (GPS) RWY 30

GLACIER PARK INTL (GPI)

RNP APCH.	Rwy 30 helicopter visibility reduction below ¾ SM NA. -1.5°C
ATIS	
<b>132.625</b>	

MISSED APPROACH: Climb to 12000 direct CEPUN and left turn via track 182° to KILLY and hold, continue climb-in-hold to 12000.

SALT LAKE CENTER	GLACIER TOWER*	GND CON	UNICOM
<b>127.075 244.875</b>	<b>124.55 (CTAF) 0</b>	<b>121.6</b>	<b>122.95</b>



CATEGORY	A	B	C	D
LNNAV MDA	3500-1	526 (600-1)	3500-1½	526 (600-1½)
CIRCLING	3520-1 543 (600-1)	3580-1 603 (700-1)	3640-1¾ 663 (700-1¾)	3760-2½ 783 (800-2½)

NW-1, 26 DEC 2024 to 23 JAN 2025

NW-1, 26 DEC 2024 to 23 JAN 2025