

WAAS CH 70799 W02A	APP CRS 020°	Rwy Idg TDZE Aprt Elev	9007 2966 2977
--	------------------------	------------------------------	---

RNAV (GPS) Z RWY 2

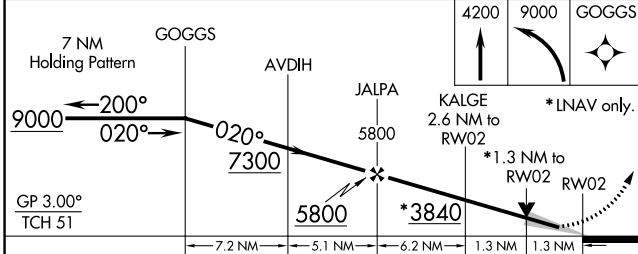
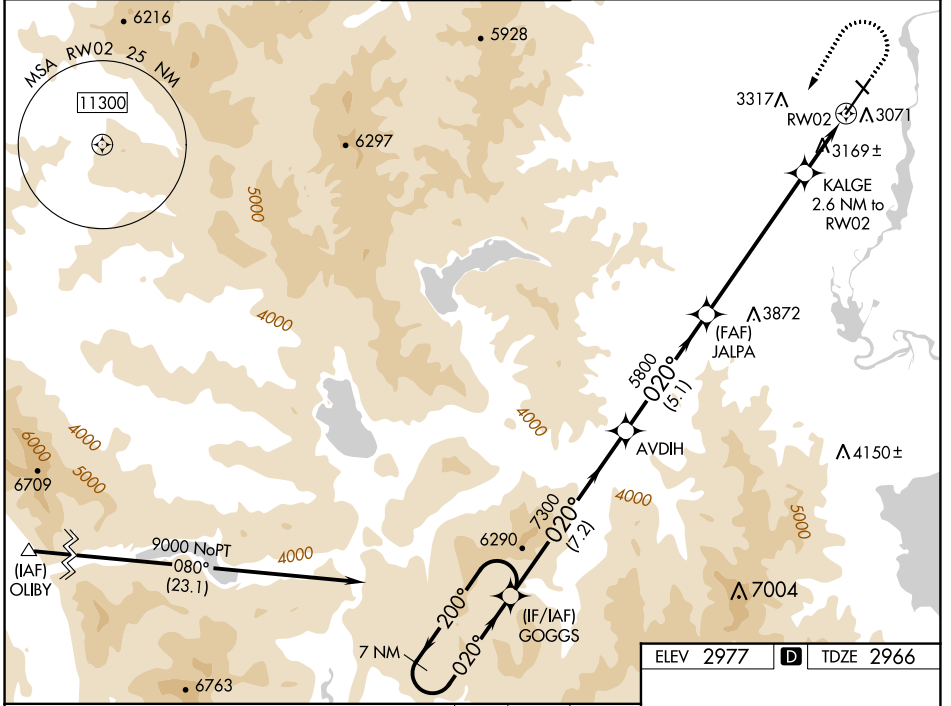
GLACIER PARK INTL (GPI)

⚠ For uncompensated Baro-VNAV systems, LNAV/VNAV NA below -24°C (-11°F) or above 53°C (128°F).
⚠ -15°C DME/DME RNP-0.3 NA.

MALSR 

MISSED APPROACH: (Do not exceed 185K until GOGGS) Climb to 4200, then climbing left turn to 9000 direct GOGGS and hold, continue climb-in-hold to 9000.

ATIS 132.625	SALT LAKE CENTER 127.075 244.875	GLACIER TOWER * 124.55 (CTAF) 0	GND CON 121.6	UNICOM 122.95
------------------------	--	---	-------------------------	-------------------------



ELEV 2977	D TDZE 2966
-----------	--------------------

REIL Rwy 20 **0**
 MIRL Rwy 12-30 **0**
 HIRL Rwy 2-20 **0**

CATEGORY	A	B	C	D
LPV DA		3290-5/8	324 (400-5/8)	
LNAV/VNAV DA		3468-1 1/4	502 (500-1 1/4)	
LNAV MDA	3420-1 1/2	454 (500-1/2)	3420-7/8	454 (500-7/8)
C CIRCLING	3480-1 503 (600-1)	3580-1 603 (700-1)	3640-1 3/4 663 (700-1 3/4)	3760-2 1/2 783 (800-2 1/2)

NW-1, 26 DEC 2024 to 23 JAN 2025

NW-1, 26 DEC 2024 to 23 JAN 2025