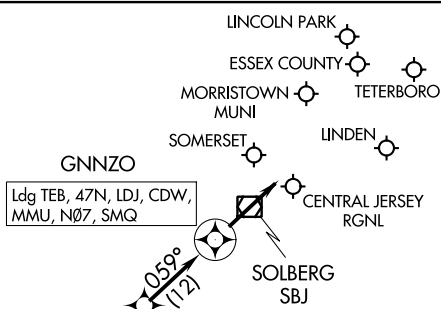


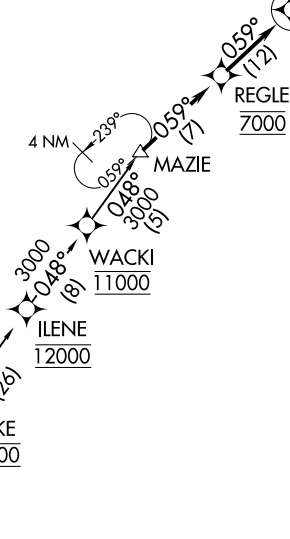
# MAZIE THREE ARRIVAL (RNAV)

TETERBORO, NEW JERSEY

POTOMAC APP CON  
124.55 317.425  
PHILADELPHIA APP CON  
119.75 269.25  
NEWARK APP CON  
132.8 379.9  
CDW ATIS  
135.5  
MMU ATIS  
124.25  
TEB D-ATIS  
114.2 132.85



Ldg TEB, 47N, LDJ, CDW,  
MMU, N07, SMQ



- NOTE: RADAR required.
- NOTE: RNAV 1.
- NOTE: DME/DME/IRU or GPS required.
- NOTE: Turboprop aircraft only.

NOTE: Chart not to scale.

## ARRIVAL ROUTE DESCRIPTION

SHLBK TRANSITION (SHLBK.MAZIE3)  
SWANN TRANSITION (SWANN.MAZIE3)

**LANDING ALL AIRPORTS:** From MAZIE on track 059° to cross REGLE at 7000, then on track 059° to GNNZO, then on track 059°. Expect RADAR vectors to final approach course.

**LOST COMMUNICATIONS:** After REGLE at 7000', proceed direct GNNZO, cross GNNZO at 3000', proceed direct SBJ VOR/DME, then proceed with approach.

NE-2, 26 DEC 2024 to 23 JAN 2025

NE-2, 26 DEC 2024 to 23 JAN 2025

# MAZIE THREE ARRIVAL (RNAV)

TETERBORO, NEW JERSEY