

APP CRS	Rwy Idg	6013
233°	TDZE	7
	Apt Elev	8

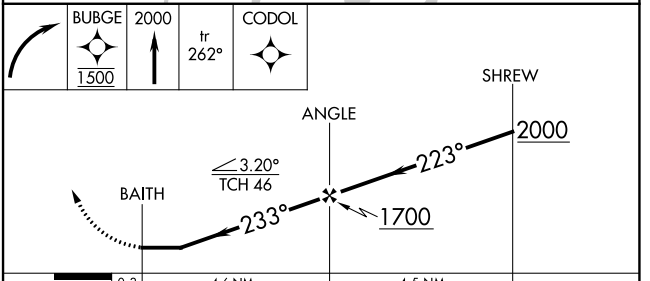
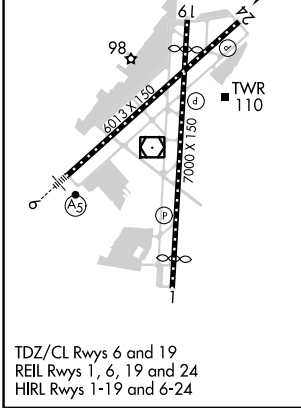
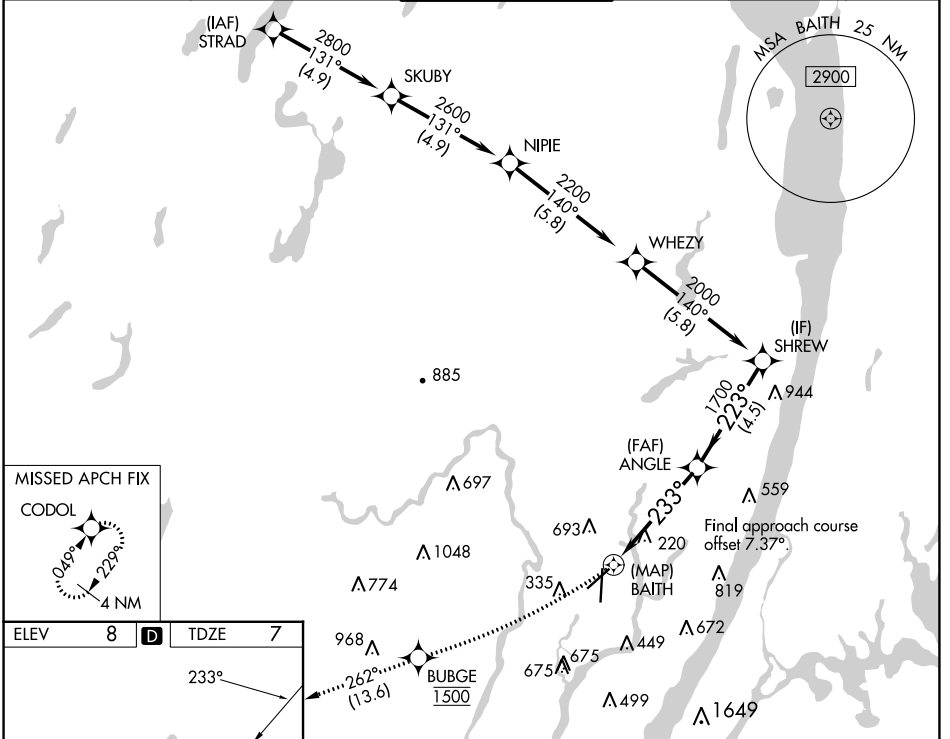
RNAV (GPS) RWY 24

TEREBORO (TEB)

RNP APCH. RADAR required.

MISSED APPROACH: Climbing right turn direct BUBGE, cross BUBGE at 1500 then climb to 2000 on track 262° to CODOL and hold.

<p>Circling NA for Cats B, C, D northwest of Rwy 6-19. Rwy 24 helicopter visibility reduction below 1 NA.</p>	D-ATIS	NEWARK APP CON	TEREBORO TOWER	GND CON	CLNC DEL	CPDLC
	114.2 132.85	127.6 379.9	119.5	121.9	128.05	



CATEGORY	A	B	C	D
LNAV MDA	580-1	573 (600-1)	580-1½	573 (600-1½)
CIRCLING	760-1	752 (800-1)	820-2½ 812 (900-2½)	1040-3 1032 (1100-3)

NE-2, 26 DEC 2024 to 23 JAN 2025

NE-2, 26 DEC 2024 to 23 JAN 2025