

WAAS CH <b>49043</b> <b>W19B</b>	APP CRS <b>182°</b>	Rwy Idg TDZE Apt Elev	<b>6230</b> <b>6</b> <b>8</b>
--	------------------------	-----------------------------	-------------------------------------

# RNAV (GPS) X RWY 19

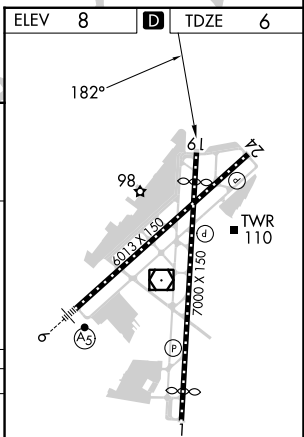
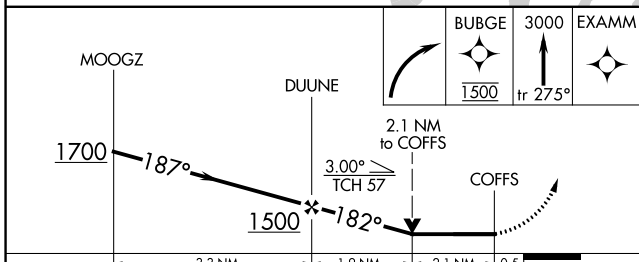
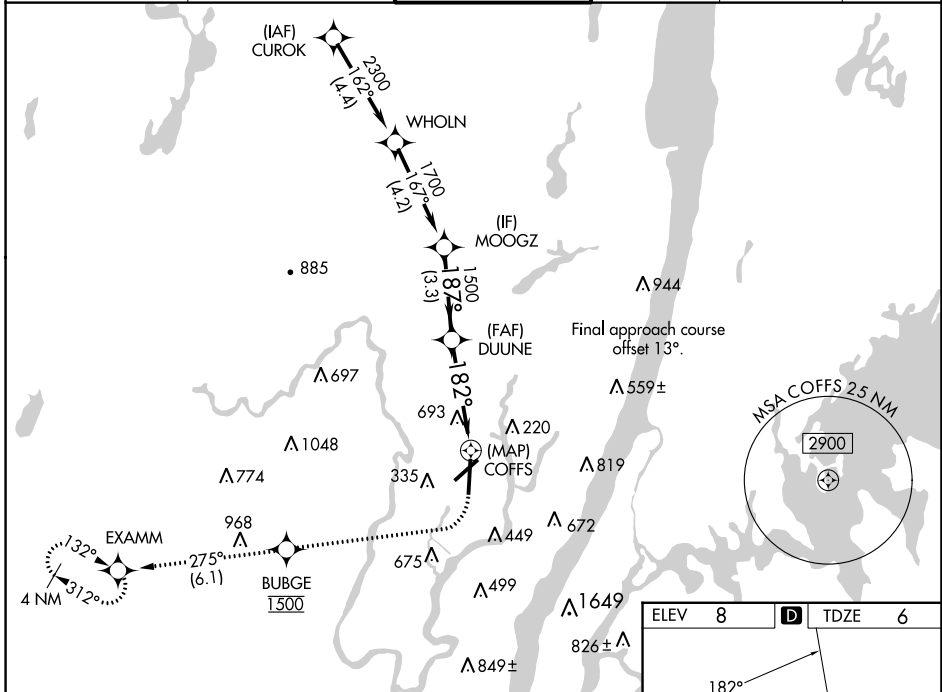
TETERBORO (TEB)

RNP APCH. RADAR required.

**▽**  
**▲** Rwy 19 helicopter visibility reduction below ¾ SM NA. Circling NA for Cats B, C, D northwest of Rwy 06-19.

MISSED APPROACH: Climbing right turn direct BUBGE, cross BUBGE at 1500, then climb to 3000 on track 275° to EXAMM and hold, continue climb-in-hold to 3000.

D-ATIS <b>114.2 132.85</b>	NEWARK APP CON <b>127.6 379.9</b>	TETERBORO TOWER <b>119.5</b>	GND CON <b>121.9</b>	CLNC DEL <b>128.05</b>	CPDLC
-------------------------------	--------------------------------------	---------------------------------	-------------------------	---------------------------	-------



CATEGORY	A	B	C	D
LP MDA	880-1 874 (900-1)	880-1½ 874 (900-1¼)	880-2½	874 (900-2½)
LNAV MDA	960-1¼ 954 (1000-1¼)	960-1½ 954 (1000-1½)	960-3	954 (1000-3)
<b>C</b> CIRCLING	960-1¼ 952 (1000-1¼)	960-1½ 952 (1000-1½)	960-3 952 (1000-3)	1040-3 1032 (1100-3)

TDZ/CL Rws 6 and 19  
REIL Rws 1, 6, 19 and 24  
HIRL Rws 1-19 and 6-24

NE-2, 26 DEC 2024 to 23 JAN 2025

NE-2, 26 DEC 2024 to 23 JAN 2025