

LOC/DME I-HOT 111.5 Chan 52	APP CRS 053°	Rwy Idg 6595 TDZE 516 Apt Elev 540
---	------------------------	---

ILS or LOC RWY 5

MEML FLD (HOT)

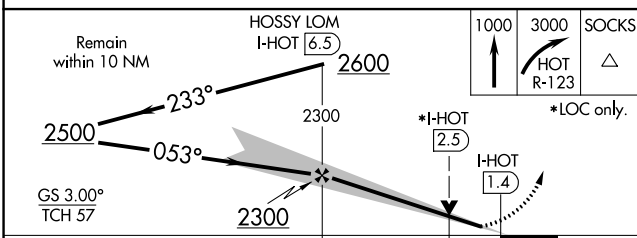
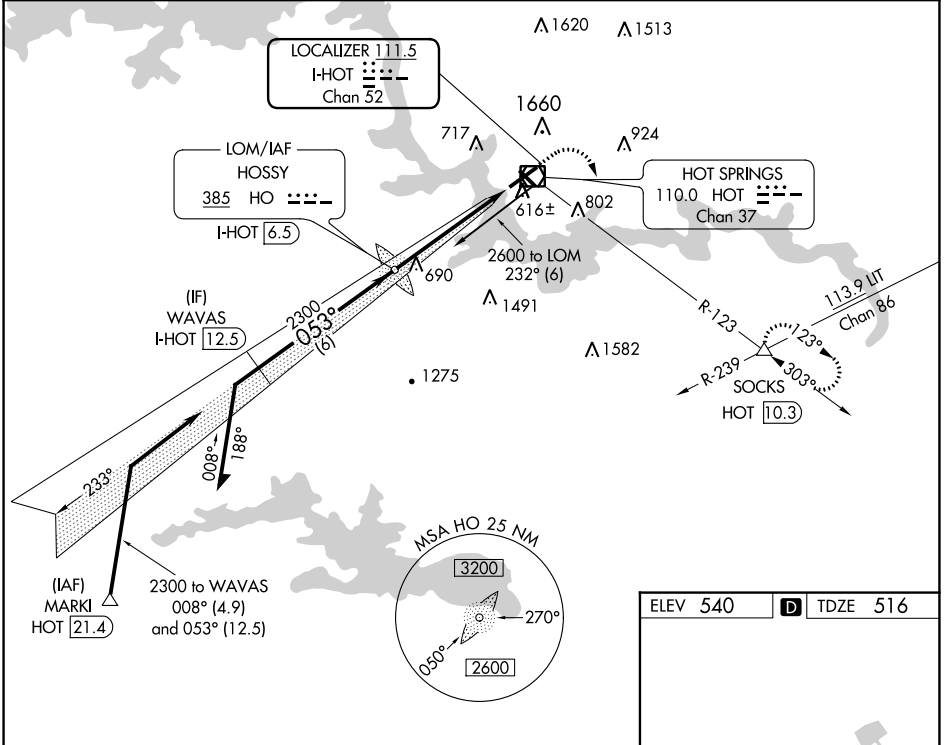
ADF or DME required.

NA Circling NA northwest of Rwy 5-23. Use I-HOT DME when on localizer course.

MALS R

MISSED APPROACH: Climb to 1000 then climbing right turn to 3000 on HOT VOR/DME R-123 to SOCKS INT/HOT 10.3 DME and hold.

ASOS 119.925	MEMPHIS CENTER 128.475 377.15	UNICOM 123.0 (CTAF)
------------------------	---	-------------------------------



ELEV 540	TDZE 516
----------	----------

FAF to MAP 5.1 NM
Knots: 60, 90, 120, 150, 180
Min:Sec: 5:06, 3:24, 2:33, 2:02, 1:42

CATEGORY	A	B	C	D
S-ILS 5	732-1/2 216 (200-1/2)			
S-LOC 5	940-1/2	424 (400-1/2)	940-3/4	424 (400-3/4)
CIRCLING	1080-1 540 (600-1)		1380-2 1/2 840 (900-2 1/2)	1620-3 1080 (1100-3)

SC-1, 26 DEC 2024 to 23 JAN 2025

SC-1, 26 DEC 2024 to 23 JAN 2025