

HI-TACAN Y RWY 23

TACAN NBC Chan 42	APCH CRS 221°	Rwy ldg 12,202 TDZE Arprt Elev 16 37
-----------------------------	-------------------------	--

[USN]

BEAUFORT MCAS (MERRITT FLD) (KNBC)

* When ALS inop, increase vis to 1 mile.

 ALS-1

 MISSED APPROACH: Climb to 500, then climbing right turn to 3000, intercept NBC TACAN R-307 direct BRAYS and hold.

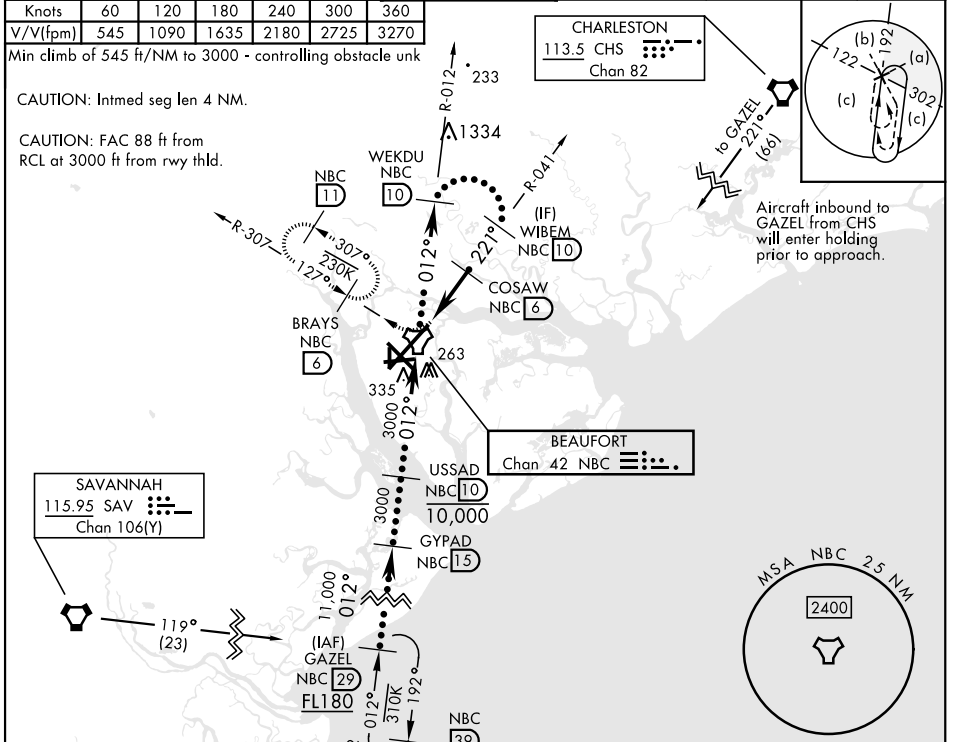
ATIS ★ 279.525	APP CON (ABV 3000) 125.125 292.125 (3000 and BLW) 123.7 269.125	TOWER ★ 119.05 342.875	GND CON 128.15 348.625	CLNC DEL 128.15 254.375	ASR/PAR
--------------------------	---	---	---	--	---------

Knots	60	120	180	240	300	360
V/V(fpm)	545	1090	1635	2180	2725	3270

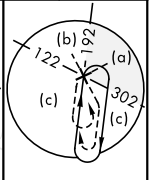
Min climb of 545 ft/NM to 3000 - controlling obstacle unk

CAUTION: Intmed seg len 4 NM.

CAUTION: FAC 88 ft from RCL at 3000 ft from rwy thld.



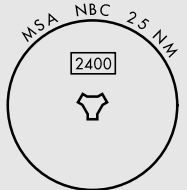
CHARLESTON
 113.5 CHS
 Chan 82



Aircraft inbound to GAZEL from CHS will enter holding prior to approach.

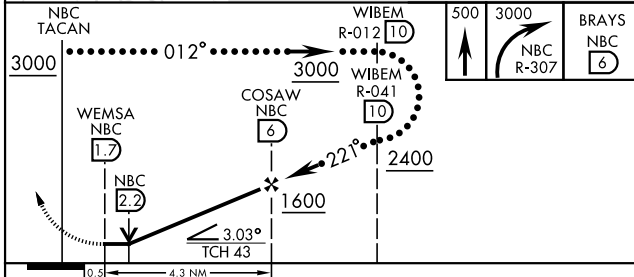
SAVANNAH
 115.95 SAV
 Chan 106(Y)

BEAUFORT
 Chan 42 NBC

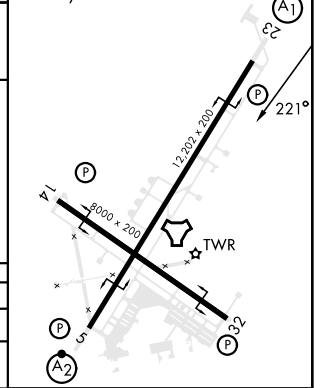


EMERG SAFE ALT 100 NM 3100

ELEV 37	TDZE 16
HIRL Rwy 5-23 and 14-32	



CATEGORY	C	D	E
S-23 *	380- $\frac{3}{4}$	364	(400- $\frac{3}{4}$)
CIRCLING	580-1 $\frac{1}{2}$ 543 (600-1 $\frac{1}{2}$)	600-2 563 (600-2)	740-2 $\frac{1}{2}$ 703 (800-2 $\frac{1}{2}$)



HI-TACAN Y RWY 23

SE-2, 26 DEC 2024 to 23 JAN 2025

SE-2, 26 DEC 2024 to 23 JAN 2025