

BEAUFORT, SOUTH CAROLINA

RNAV (GPS) RWY 23

WAAS Chan 93379 W23A	APCH CRS 227°	Rwy Idg 12,202 TDZE 16 Arprt Elev 37
--	-------------------------	---

[USN]

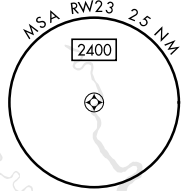
BEAUFORT MCAS (MERRITT FLD) (KNBC)

RNP APCH	ALSIF-1 	MISSED APPROACH: Climb to 3000 direct ATBUY and hold. Continue climb in hold to 3000.
RADAR required.		
<p>▼ **When ALS inop, increase vis to 3/4 mile. ▼ **When ALS inop, increase vis to 1 mile.</p>		

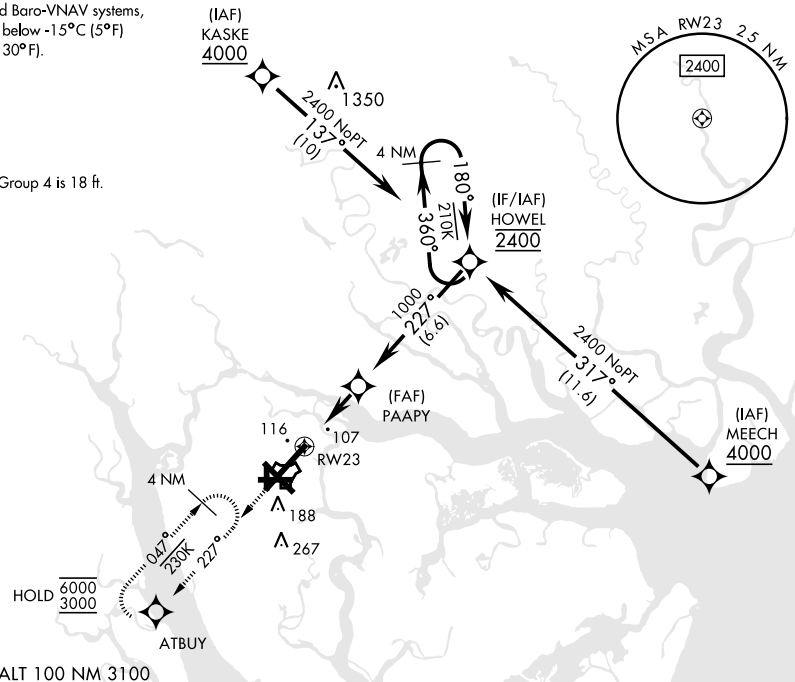
ATIS ★ 279.525	APP CON 125.125 292.125 (ABV 3000) 123.7 269.125 (3000 and BLW)	TOWER ★ 119.05 342.875	GND CON 128.15 348.625	CLNC DEL 128.15 254.375	ASR/ PAR
--------------------------	---	----------------------------------	----------------------------------	-----------------------------------	-------------

For uncompensated Baro-VNAV systems,
LNAV/VNAV NA below -15°C (5°F)
or above 54°C (130°F).
• 164

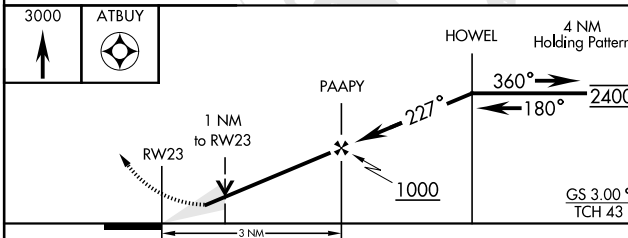
(IAF)
KASKE
4000



CAUTION: WCH Group 4 is 18 ft.

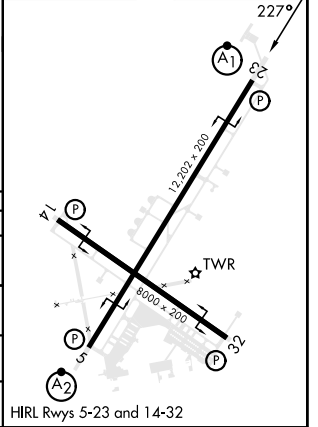


EMERG SAFE ALT 100 NM 3100



ELEV 37	TDZE 16
---------	---------

CATEGORY	A	B	C	D
LPV DA *	216-1/2		200	(200-1/2)
LNAV/VNAV DA **	380-5/8		364	(400-3/8)
LNAV MDA **	380-1/2	364 (400-1/2)	380-3/4	364 (400-3/4)
CIRCLING	560-1	523 (600-1)	580-1 1/2 543 (600-1 1/2)	600-2 563 (600-2)



BEAUFORT, SOUTH CAROLINA
Amdt 5 11JUL24

32° 29' N-80° 43' W

BEAUFORT MCAS (MERRITT FLD) (KNBC)

RNAV (GPS) RWY 23

SE-2, 26 DEC 2024 to 23 JAN 2025

SE-2, 26 DEC 2024 to 23 JAN 2025