

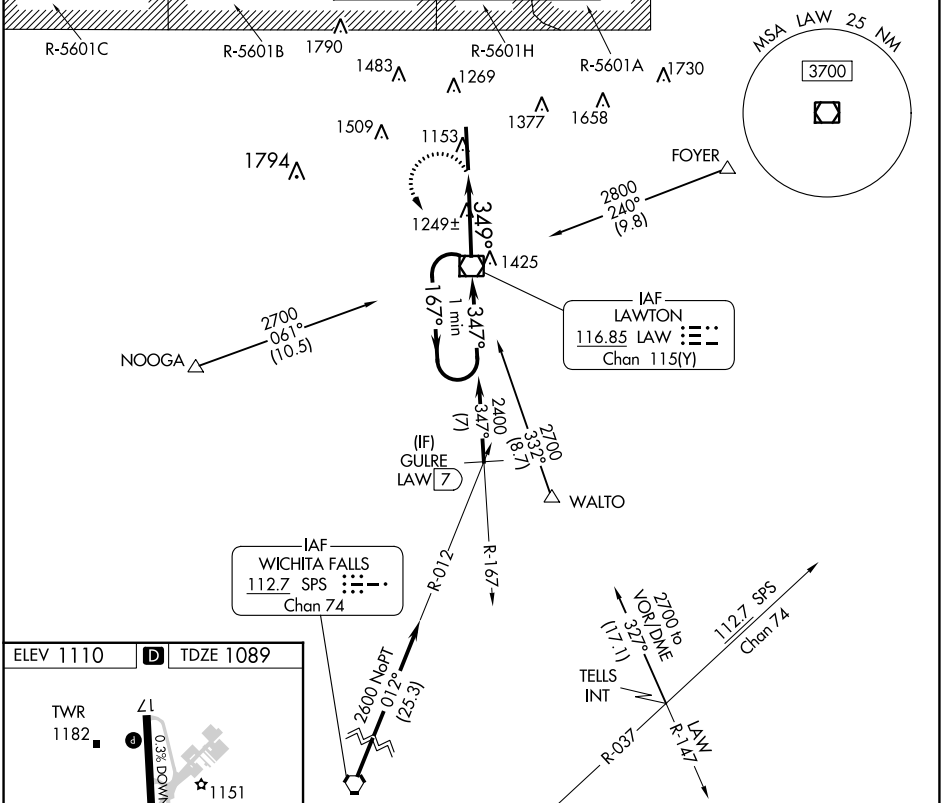
VOR/DME LAW 116.85 Chan 115(Y)	APP CRS 349°	Rwy Idg TDZE Apt Elev	8599 1089 1110
--	------------------------	-----------------------------	---

VOR RWY 35

LAWTON-FORT SILL RGNL (LAW)

For inop ALS, increase Cat C/D visibility to 1½ SM. ASR	MALS 	MISSED APPROACH: Climbing left turn to 2800 direct LAW VOR/DME and hold, continue climb-in-hold to 2800.	

ATIS 120.75	FORT SILL APP CON 120.55 322.4	LAWTON TOWER ★ 119.9(CTAF) 257.8	GND CON 121.9	UNICOM 122.95
-----------------------	--	--	-------------------------	-------------------------



ELEV 1110	D	TDZE 1089
-----------	----------	-----------

REIL Rwy 17 **35**
HIRL Rwy 17-35

FAF to MAP 3.5 NM

Knots	60	90	120	150	180
Min:Sec	3:30	2:20	1:45	1:24	1:10

CATEGORY	A	B	C	D
S-35	1500-½ 411 (500-½)		1500-¾ 411 (500-¾)	
CIRCLING	1620-1 510 (600-1)		1820-2 710 (800-2)	1820-2½ 710 (800-2½)

SC-1, 26 DEC 2024 to 23 JAN 2025

SC-1, 26 DEC 2024 to 23 JAN 2025