

OXNARD, CALIFORNIA

# ILS Y or LOC/DME Y RWY 21

LOC/DME I-RRG <b>109.3</b> Chan <b>30</b>	APCH CRS <b>212°</b>	Rwy ldg <b>11,102</b> TDZE <b>13</b> Arprt Elev <b>13</b>
---	-------------------------	---

[USN]

POINT MUGU NAS  
(NAVAL BASE VENTURA CO)(KNTD)

DME or RADAR required.

- ▼ \* When ALS inop, increase vis to ¾ mile.
- \*\* When ALS inop, increase vis CAT AB to 1 mile, CAT CD vis to 1½ miles.
- \*\*\* Circling not authorized E of Rwy 3-21.

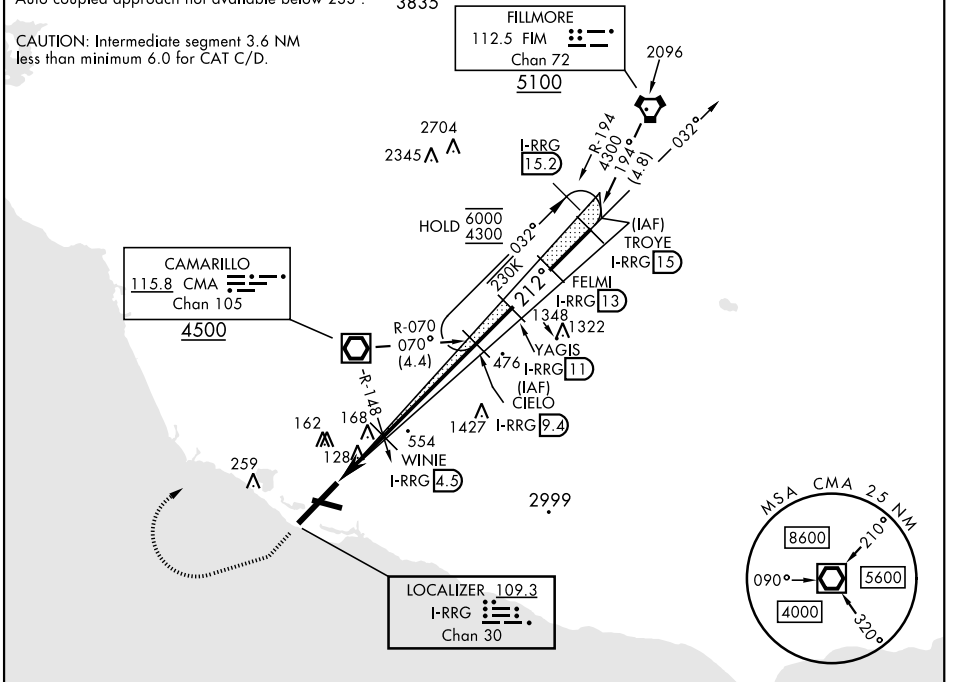


MISSED APPROACH: Climb to 500 via hdg 212°, then climbing right turn to 3000 via hdg 247°, then climbing right turn to 5000 direct CMA VOR/DME, then via CMA R-070 to CIELO and hold.

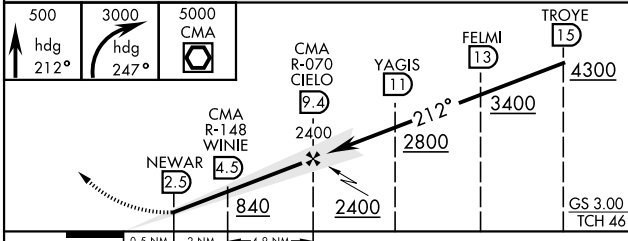
ATIS ★ <b>125.55 363.05</b>	APP CON <b>128.65 307.275</b>	TOWER ★ <b>124.85 290.375</b>	GND CON <b>121.6 360.2</b>	CLNC DEL <b>120.75 279.55</b>	ASR/PAR
--------------------------------	----------------------------------	----------------------------------	-------------------------------	----------------------------------	---------

Auto coupled approach not available below 233'. 3835

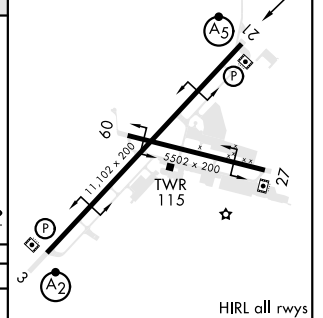
CAUTION: Intermediate segment 3.6 NM less than minimum 6.0 for CAT C/D.



EMERG SAFE ALT 100 NM 12,100



ELEV	13
TDZE	13



CATEGORY	A	B	C	D
S-ILS 21*	213-½ 200 (200-½)			
S-LOC 21**	420-½	407 (500-½)	420-¾	407 (500-¾)
CIRCLING***	440-1 427 (500-1)	520-1 507 (600-1)	520-1½ 507 (600-1½)	600-2 587 (600-2)

FAF to MAP 6.9 NM					
Knots	60	90	120	150	180
Min:Sec	6:54	4:36	3:27	2:46	2:18

OXNARD, CALIFORNIA  
Amdt 6 29DEC22

34°07'N-119°07'W

POINT MUGU NAS (KNTD)  
(NAVAL BASE VENTURA CO)

# ILS Y or LOC/DME Y RWY 21

SW-3, 26 DEC 2024 to 23 JAN 2025

SW-3, 26 DEC 2024 to 23 JAN 2025